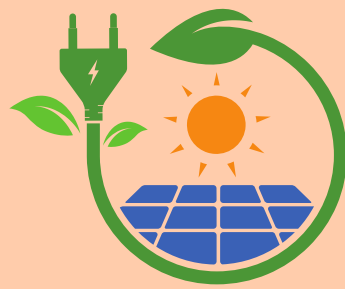


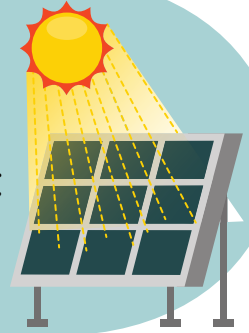
PROCESS DESCRIPTION

SOLAR POWER SYSTEM

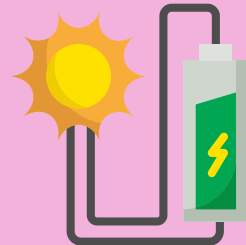
How does a solar panel system work?



First, the panel converts the Sun's energy into a DC (direct current) electric current. **Second**, the current flows to the controller.

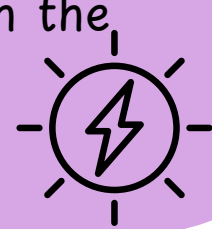


Then, it can flow from the controller to the lamps or to the battery. The battery stores the electricity.



If the Sun shines, the DC current can flow from the panel, through the controller and into the lamps.

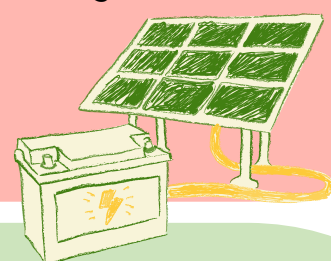
If the Sun does not shine, the current can flow from the battery, through the controller and into the lamps.



If the lamps are off, the current can flow from the panel, through the controller, and into the battery.



Finally, the controller regulates the current flow from the panel to the battery or from the battery to the lamps.



Solar power systems are an efficient and sustainable way to harness renewable energy from the sun.

