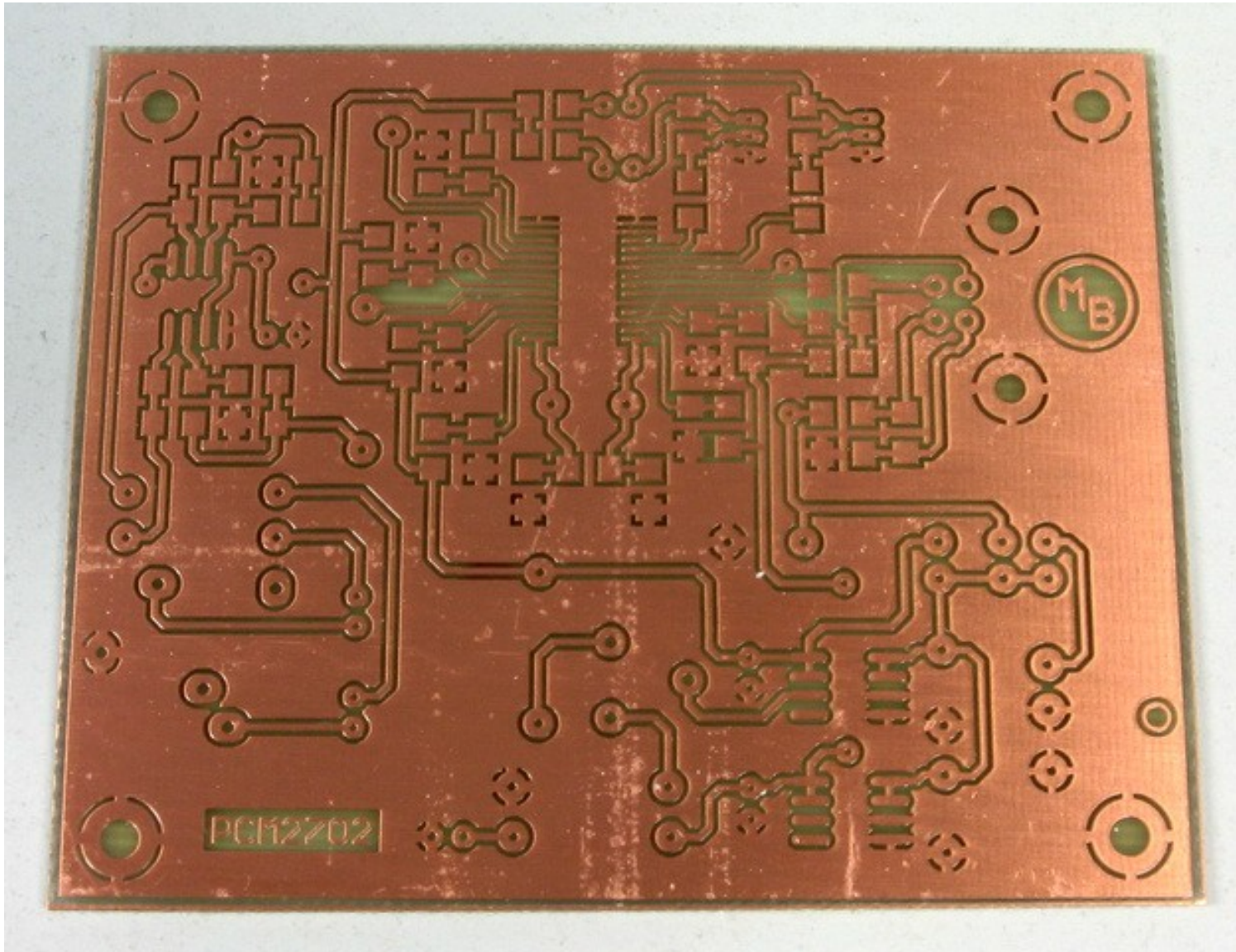


PCB

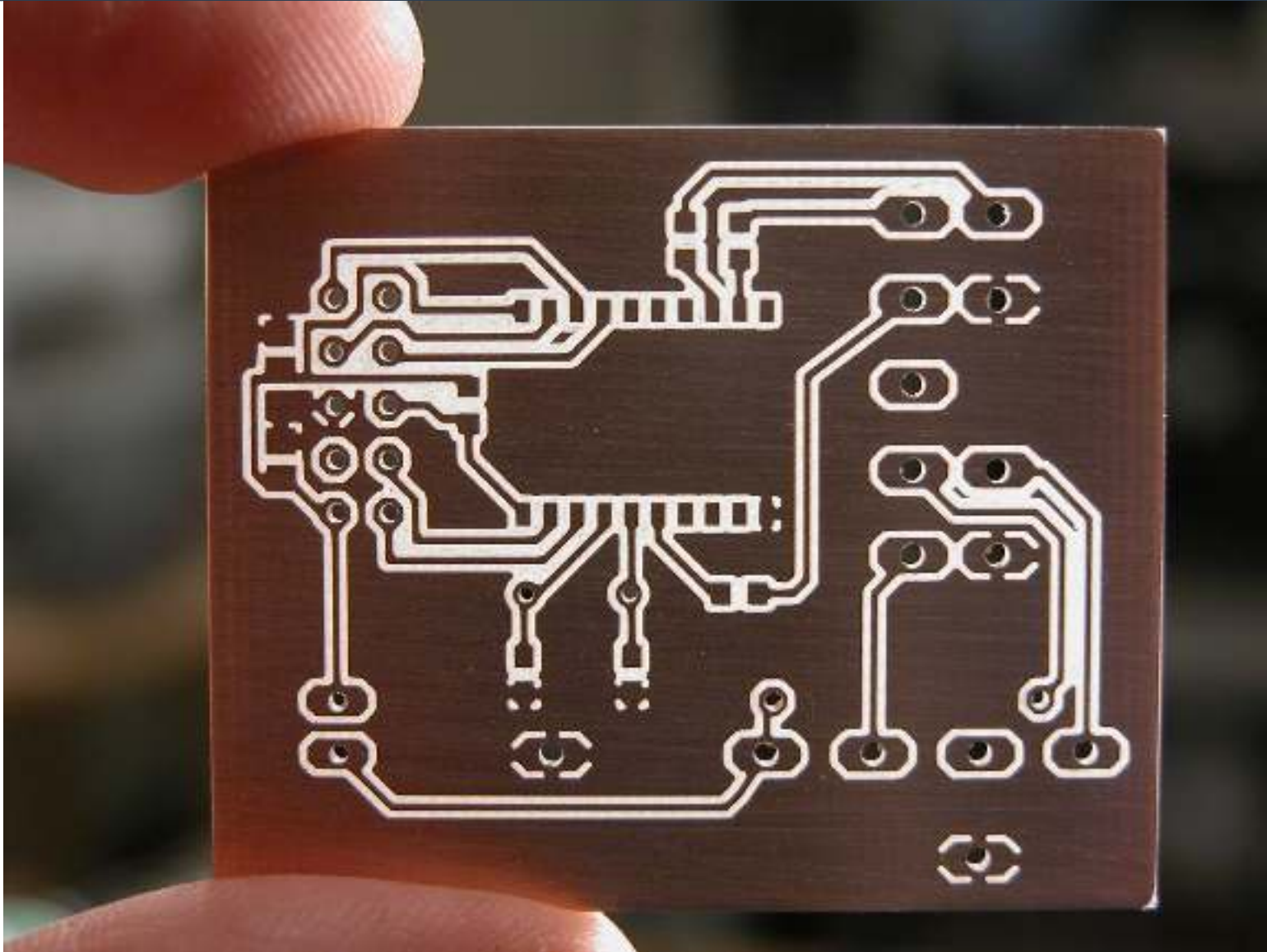
Circuito Impreso
(Printed Circuit Board)



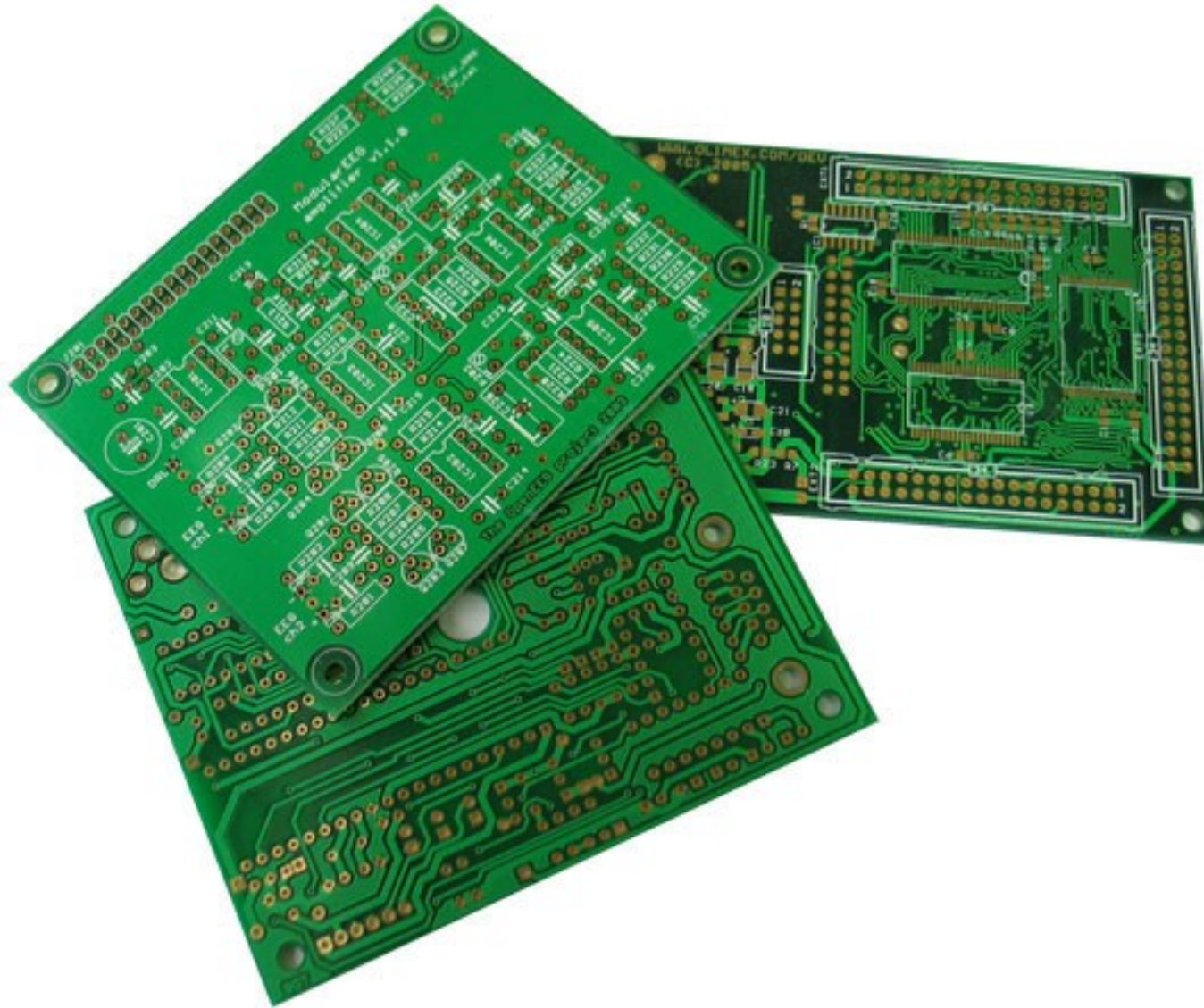
Ejemplos



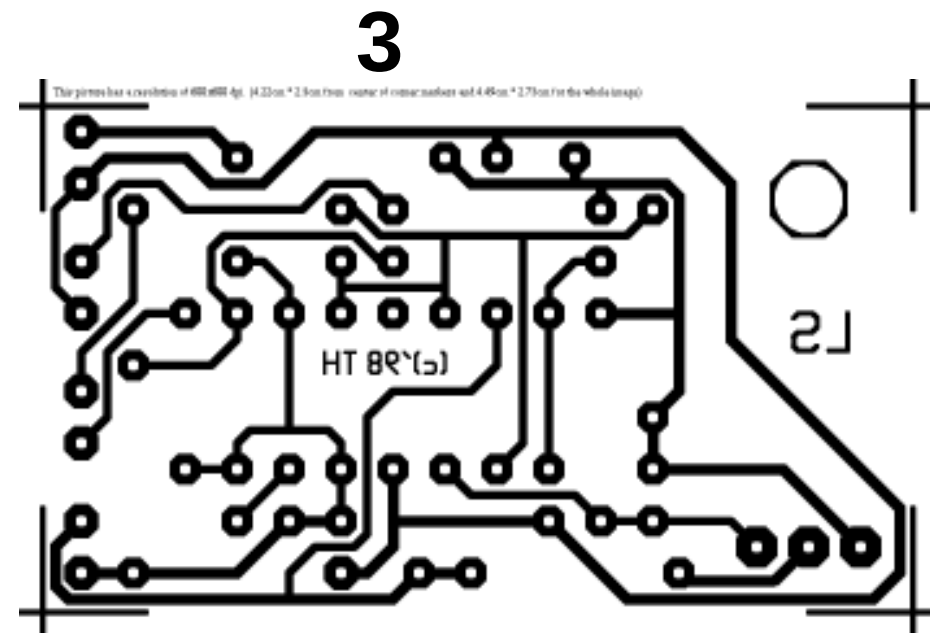
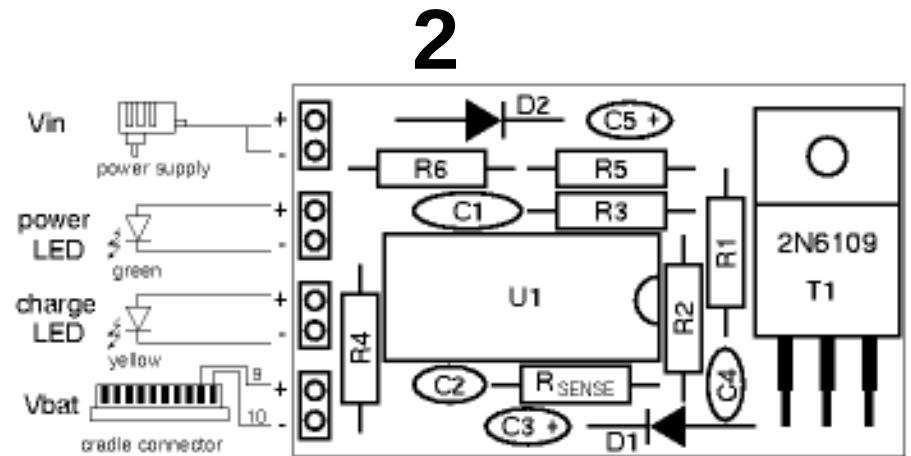
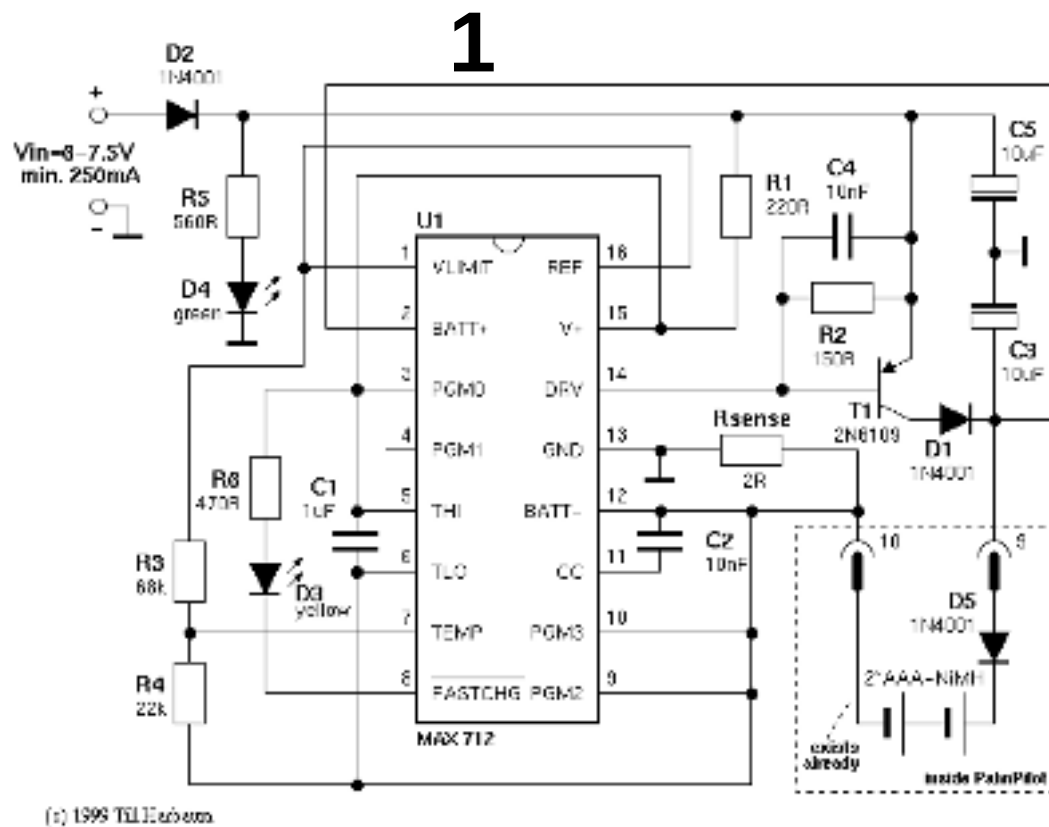
Ejemplos



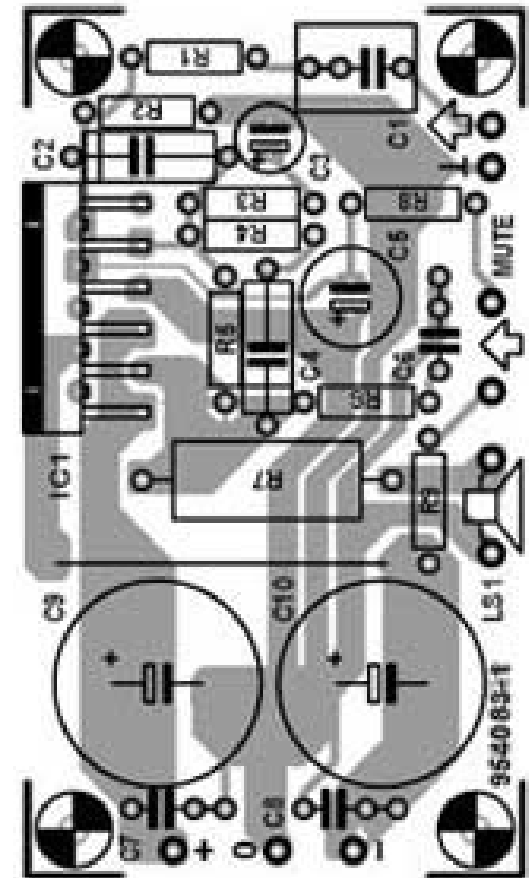
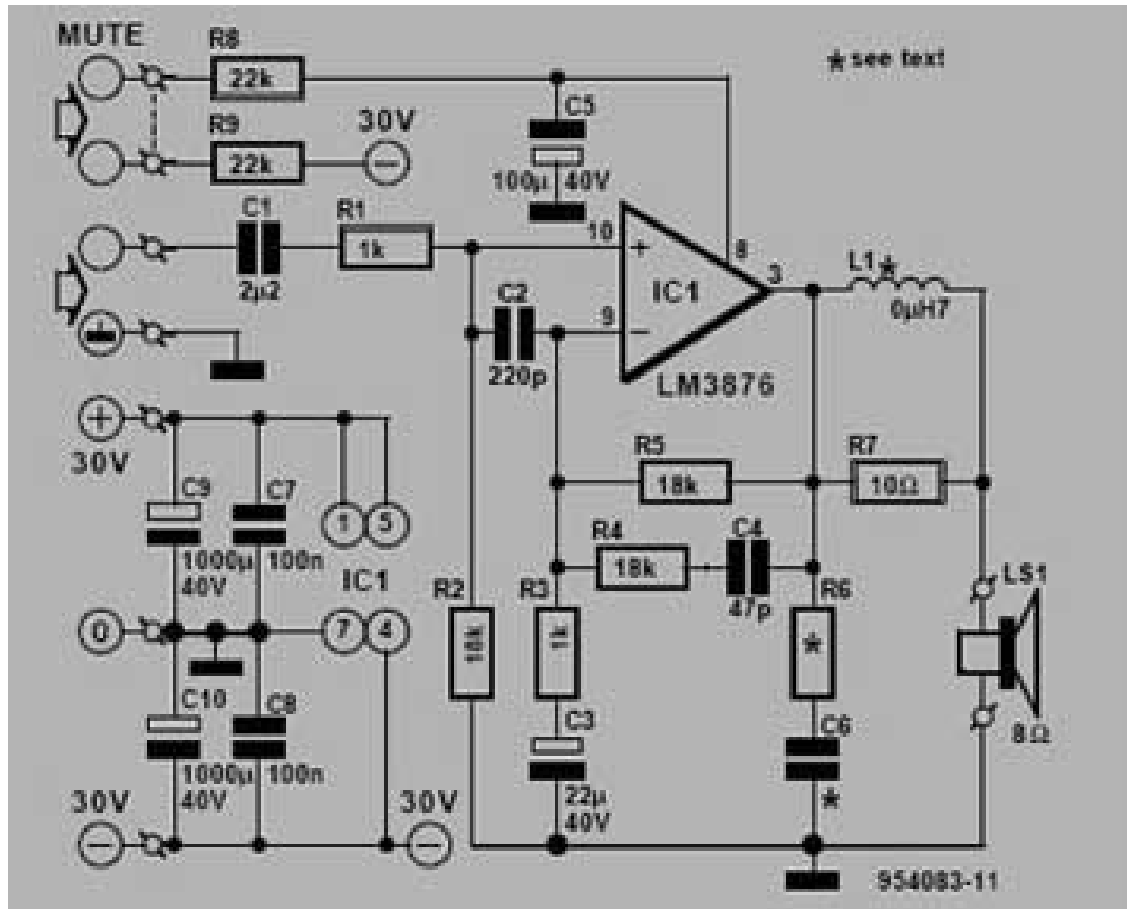
Ejemplos



Diseño



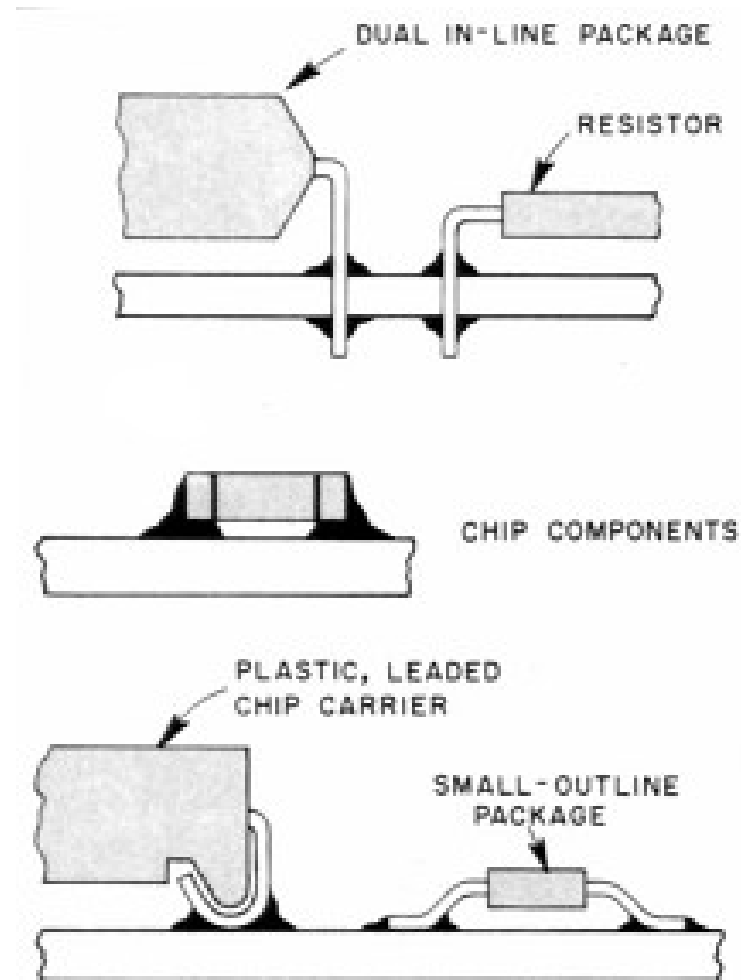
Diseño



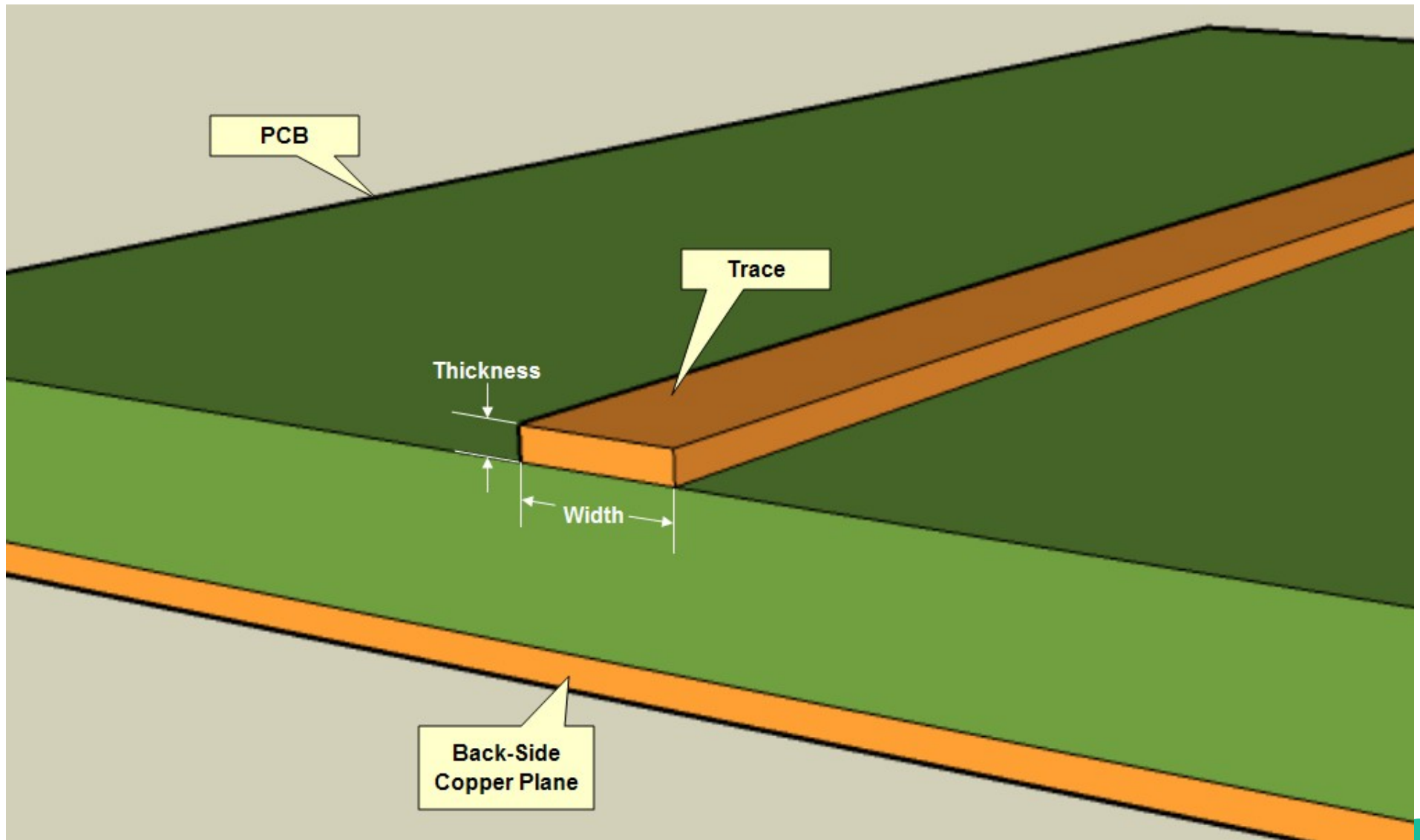
Vista lateral



Técnicas de soldado



Estructura



Estructura

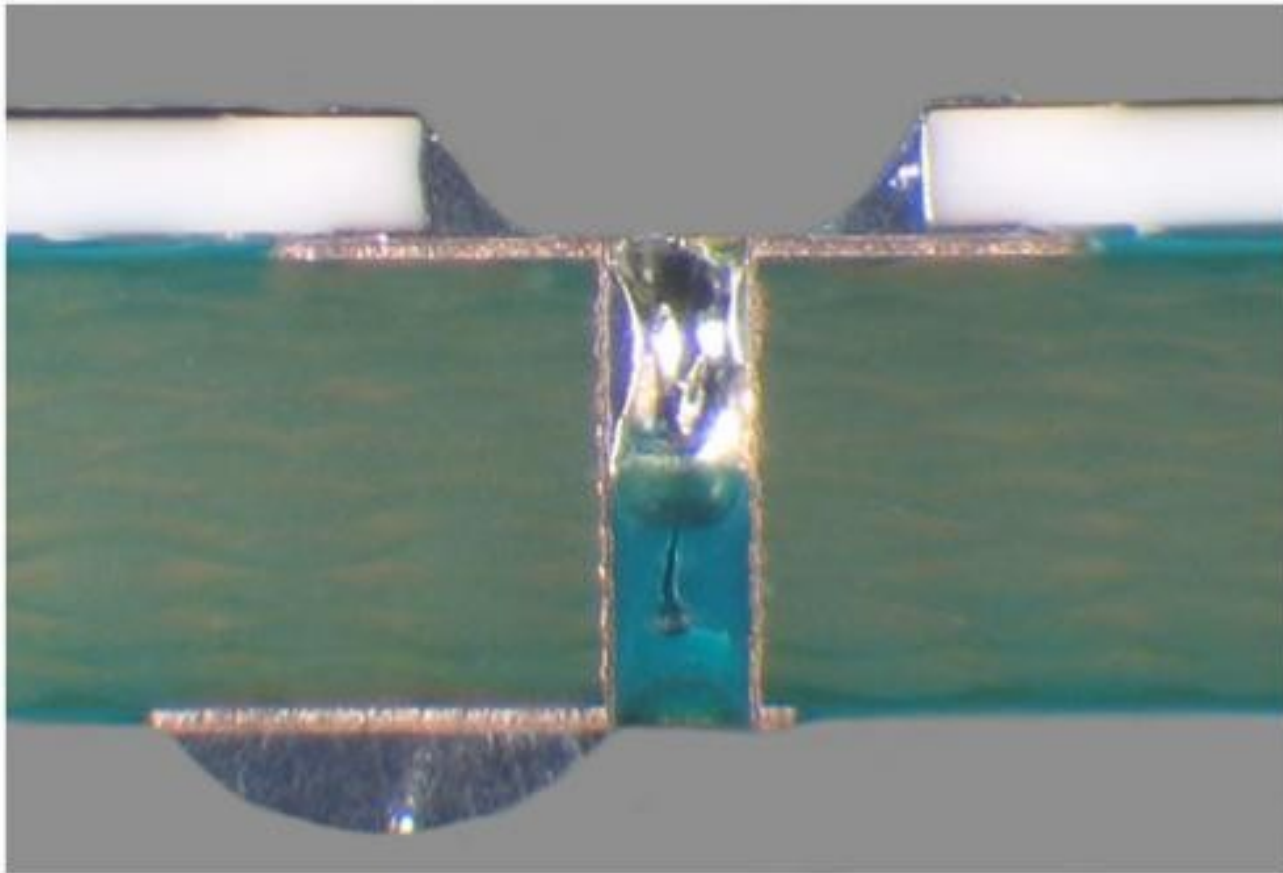
Sustrato

- Fenólicos
- Fibra de Vidrio

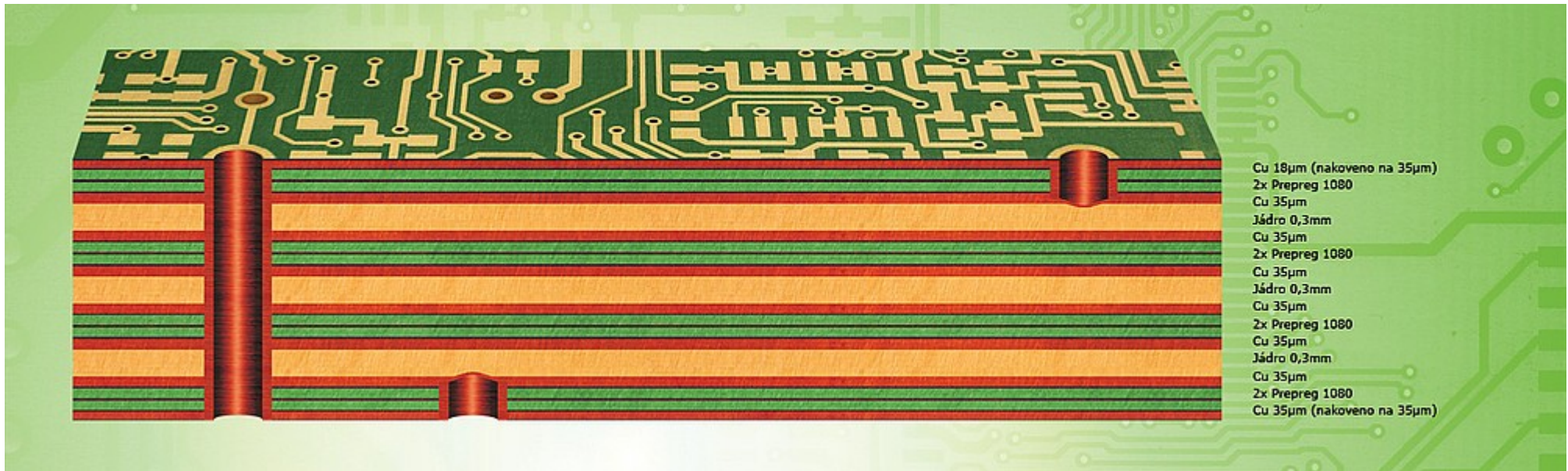
Espesor cobre

oz/ft ²	µm	in	mil
0,5	17,5	0,0007	0,7
0,75	25,5	0,0010	1,0
1	35	0,0014	1,4
2	71	0,0028	2,8
3	105	0,0042	4,2

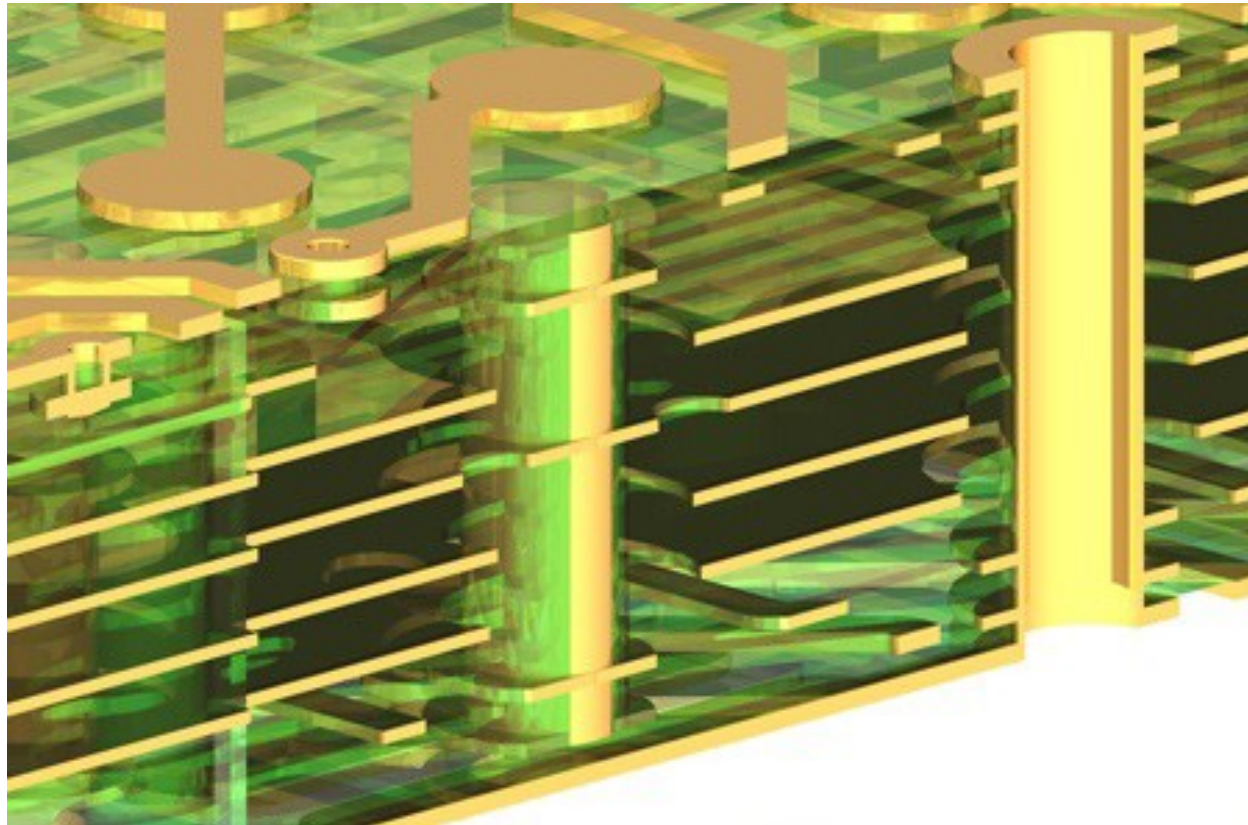
Through-Hole Technology



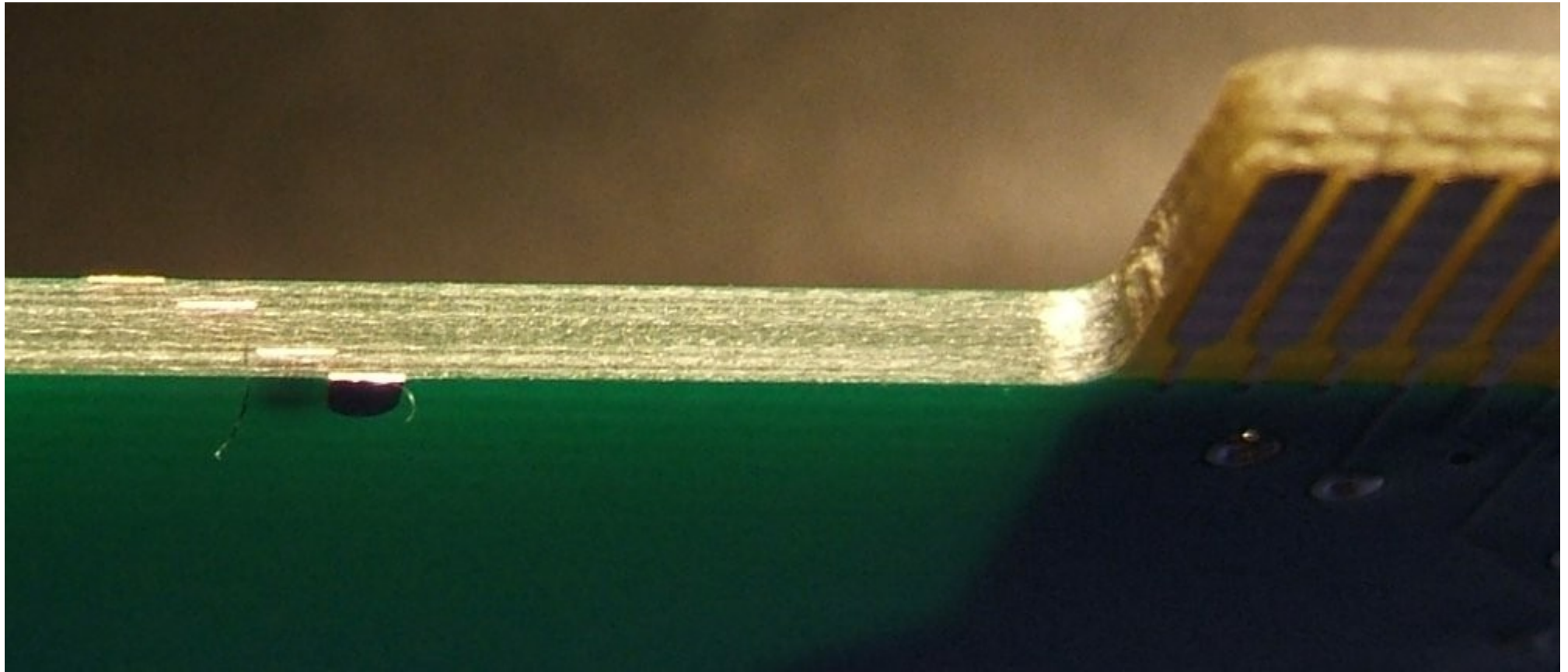
Multicapa



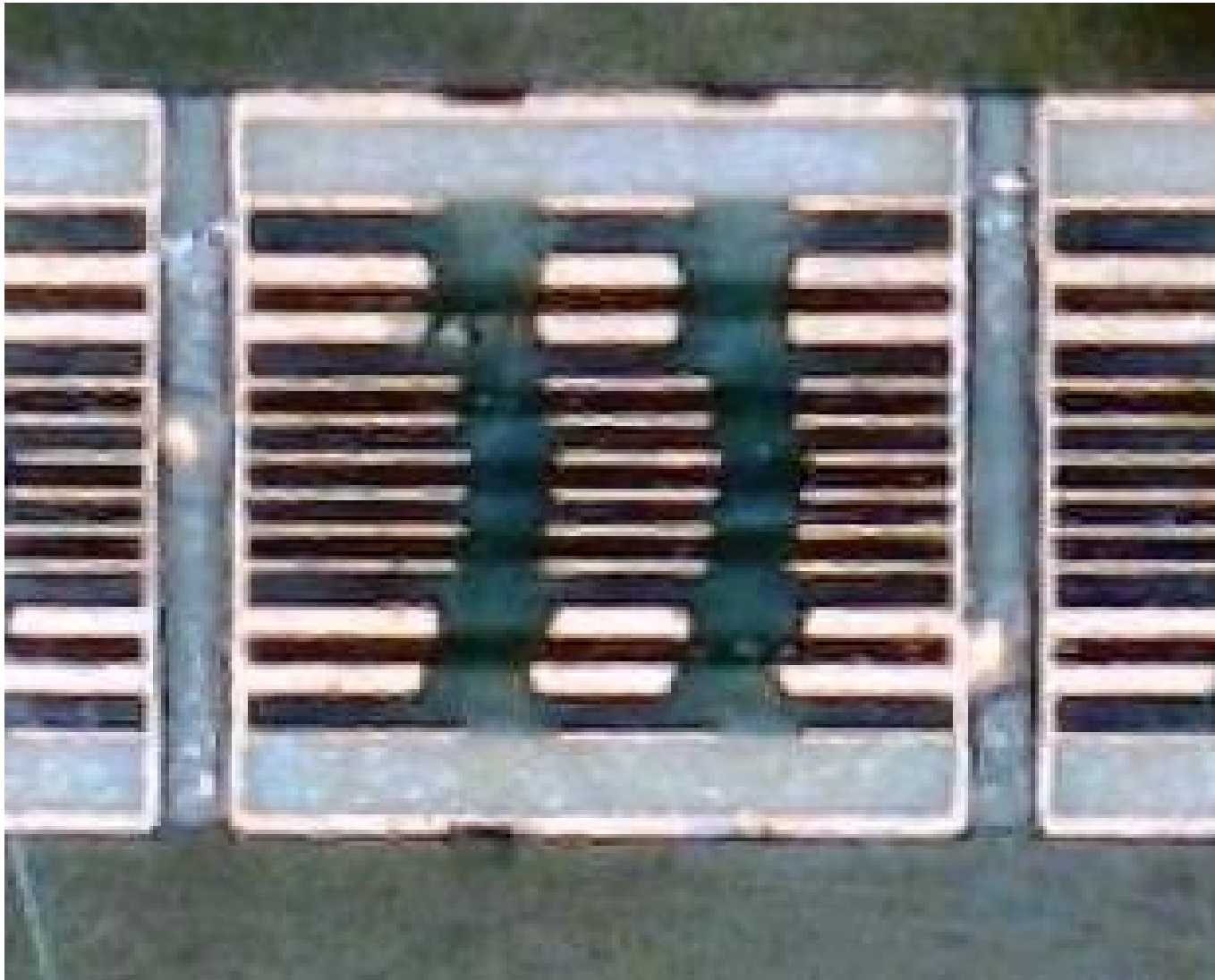
Multicapa



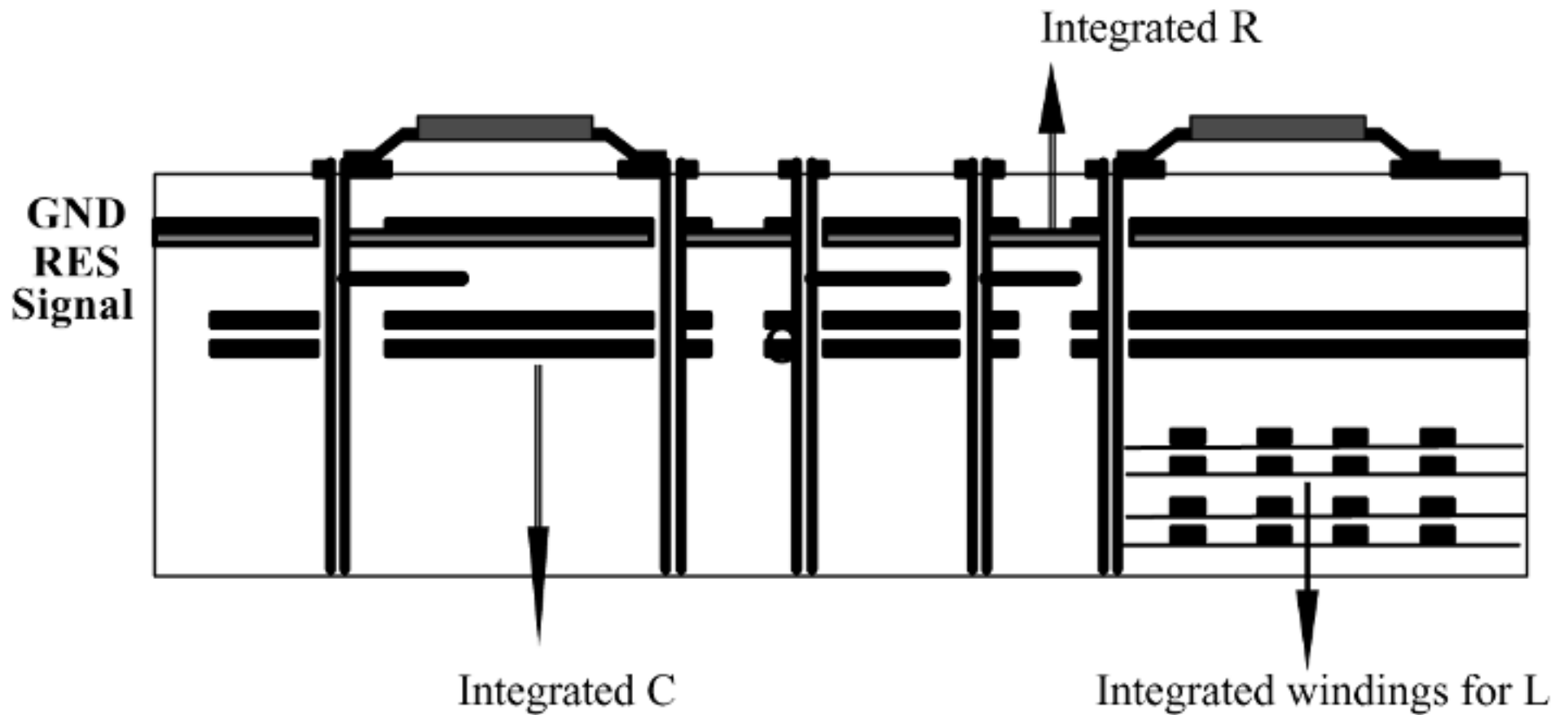
Multicapa



Multicapa (alineación)



Multicapa



Rollos de estaño



Detalle estaño

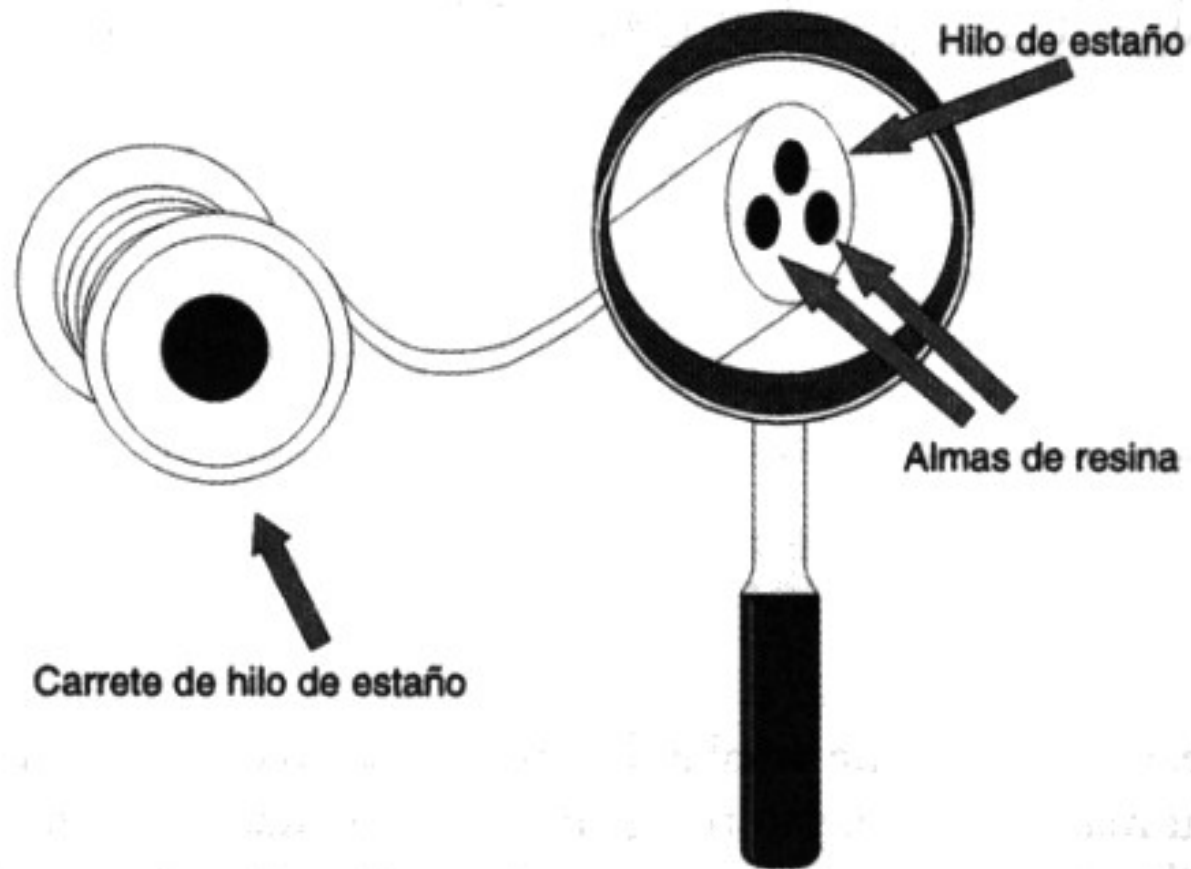
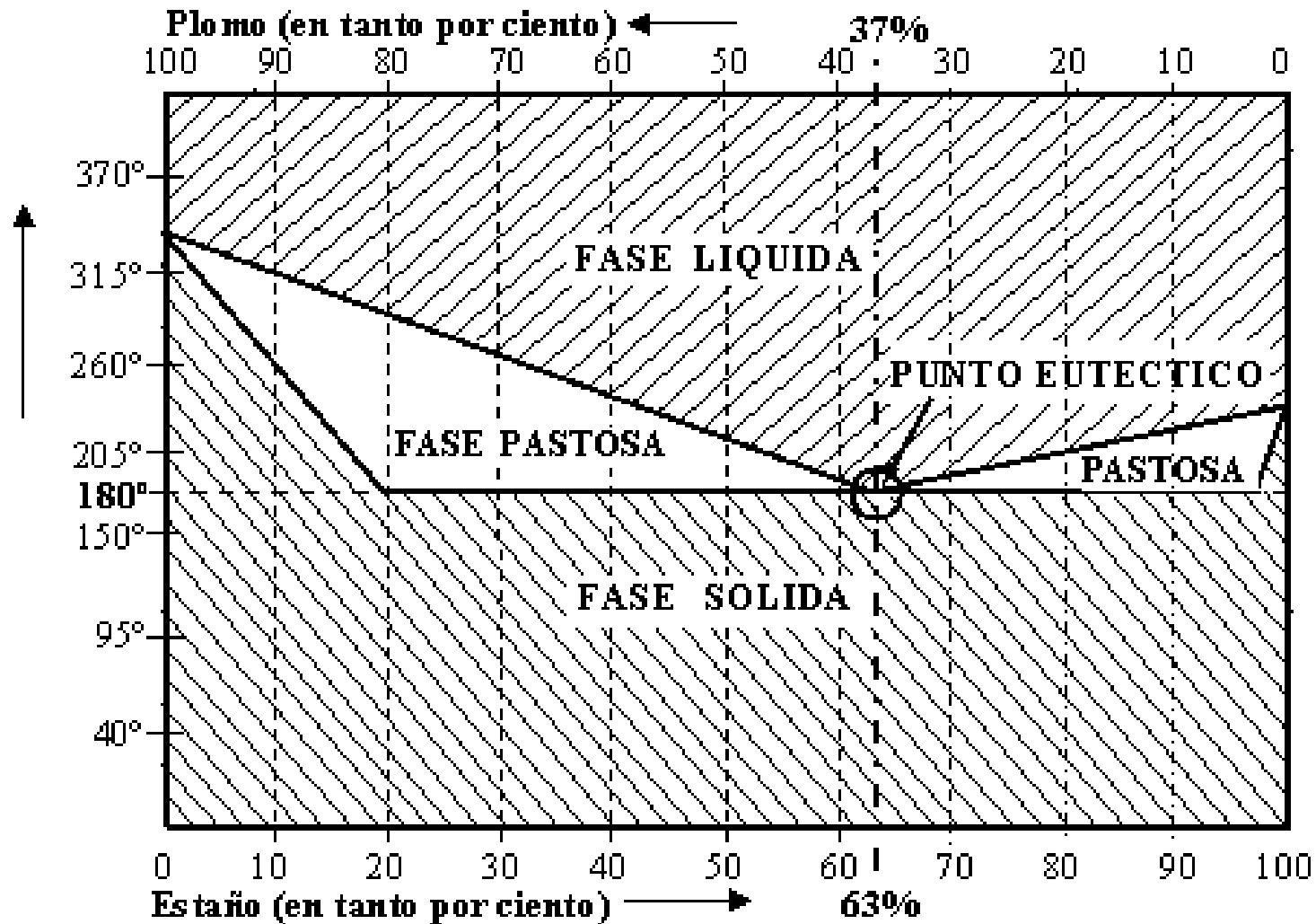
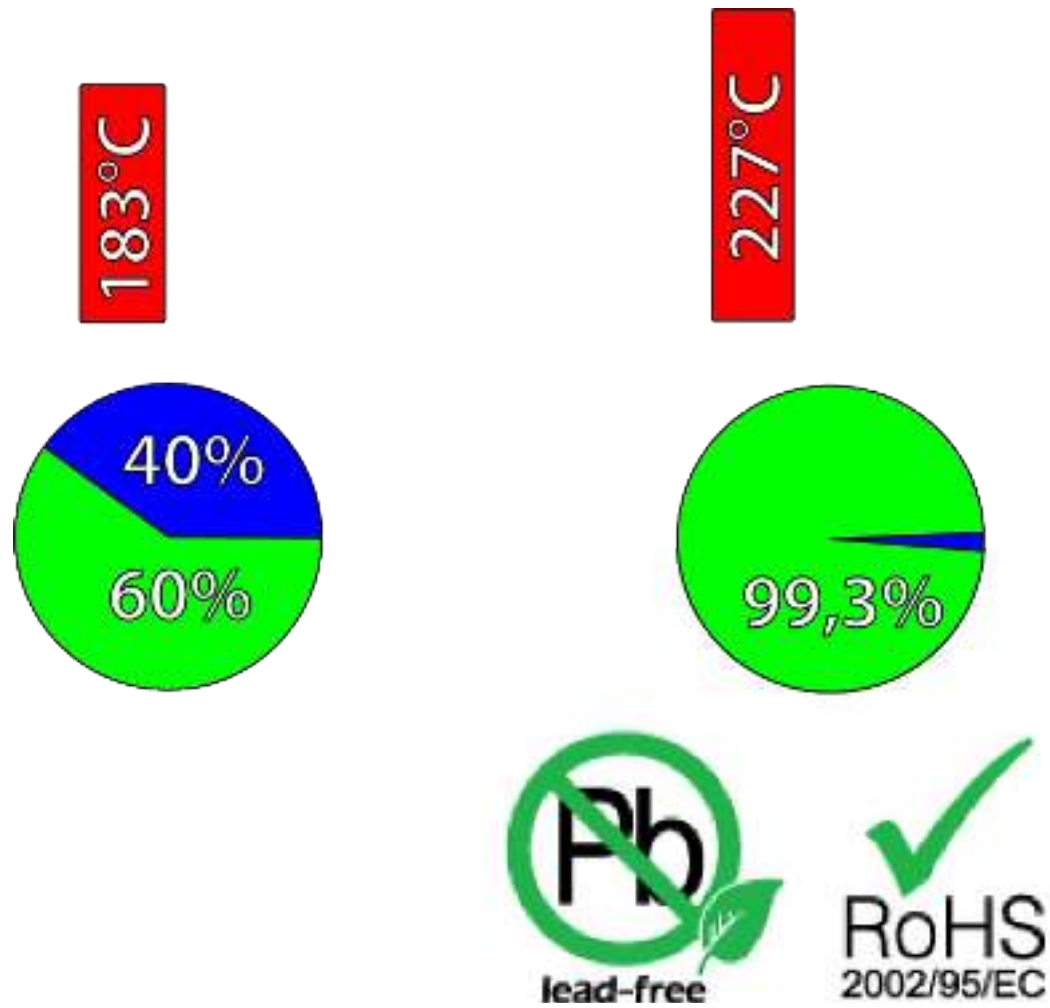


Diagrama de fases Sn/Pb



Lead Free



Lead Free



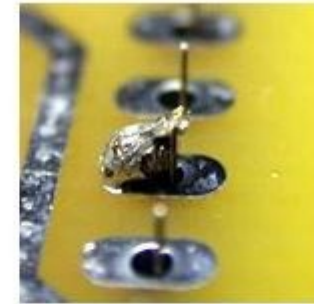
Soldador



Punta de Cerámica



Ejemplos



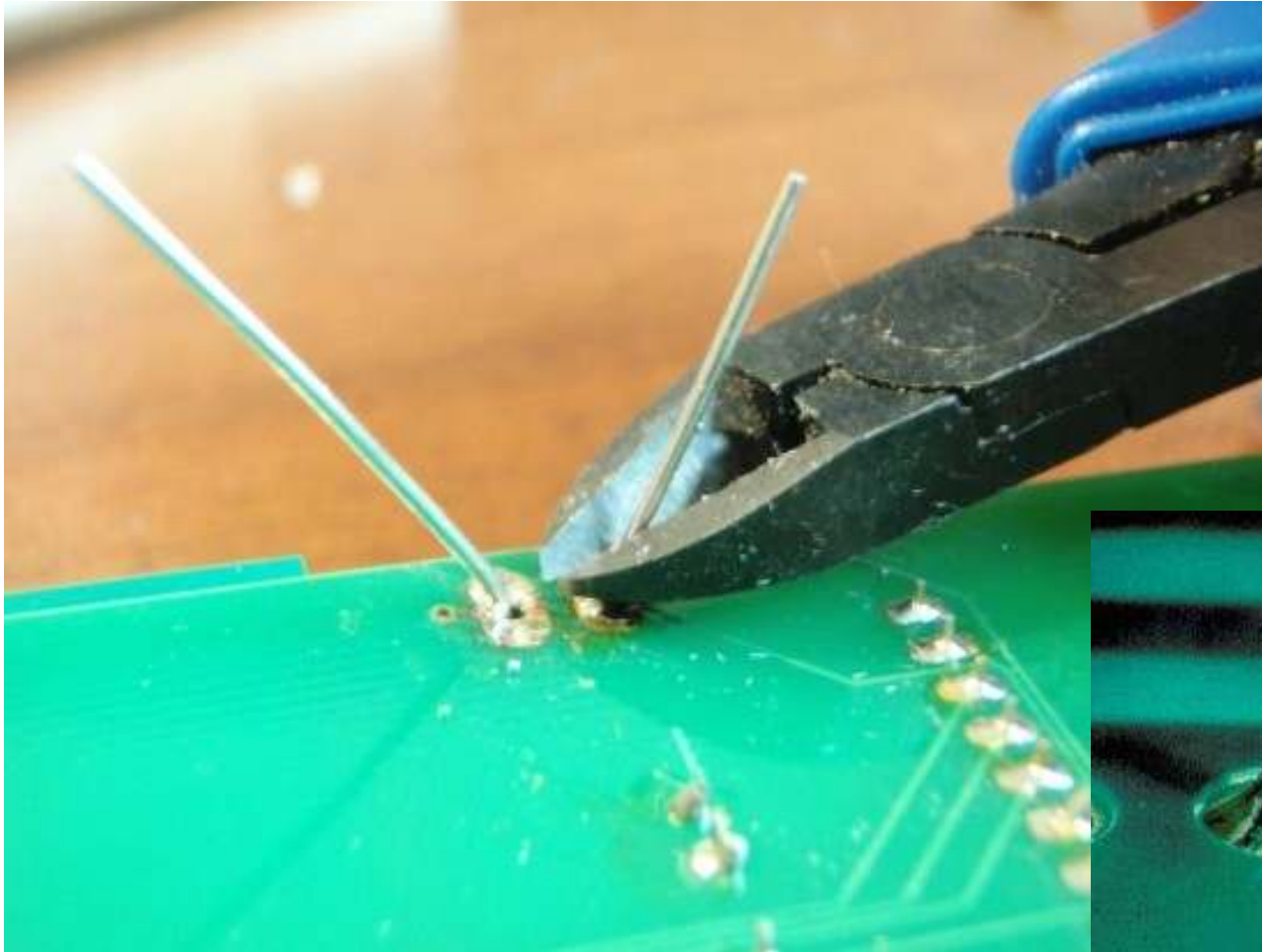
Mal



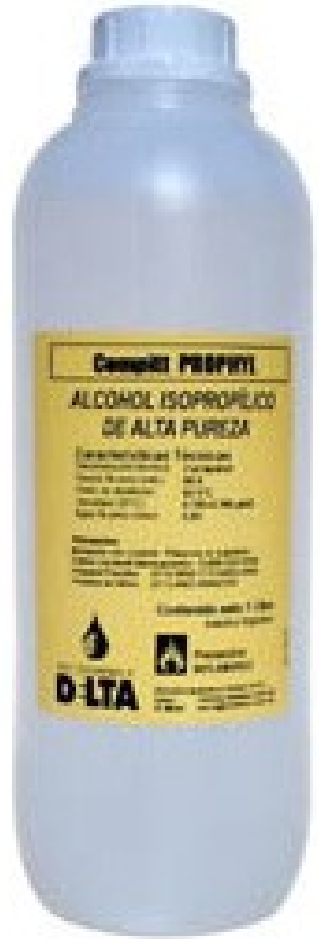
Bien



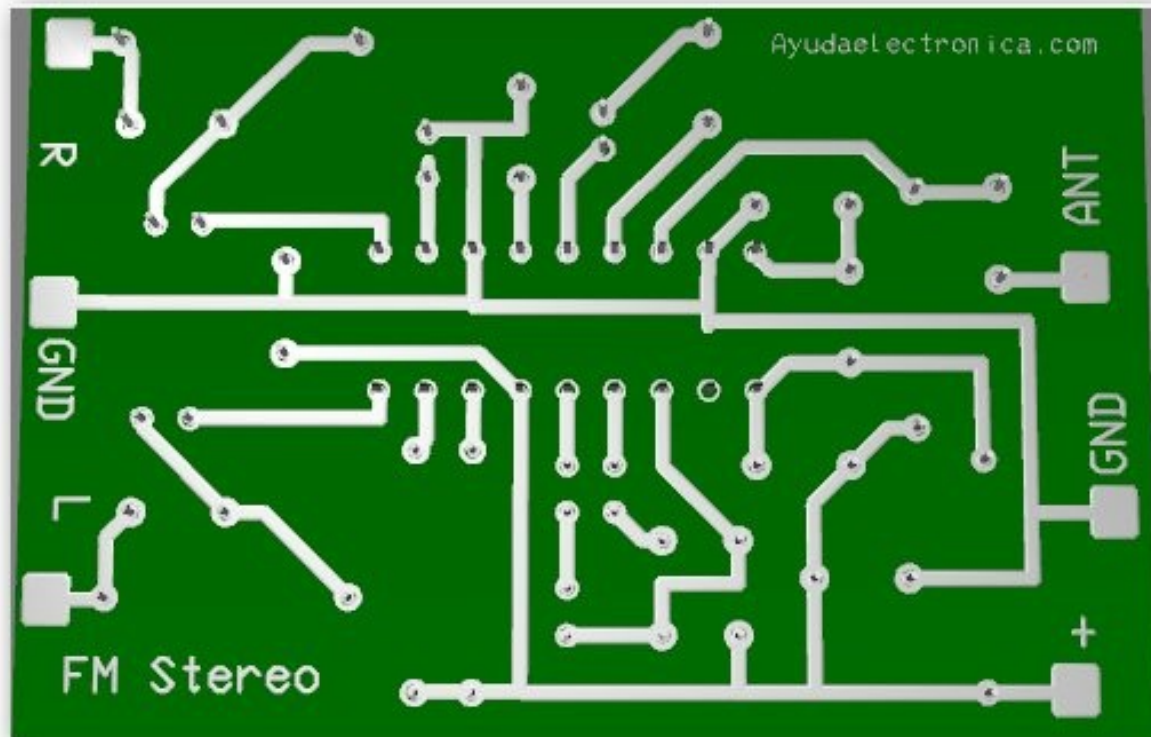
1ro cortar y después soldar



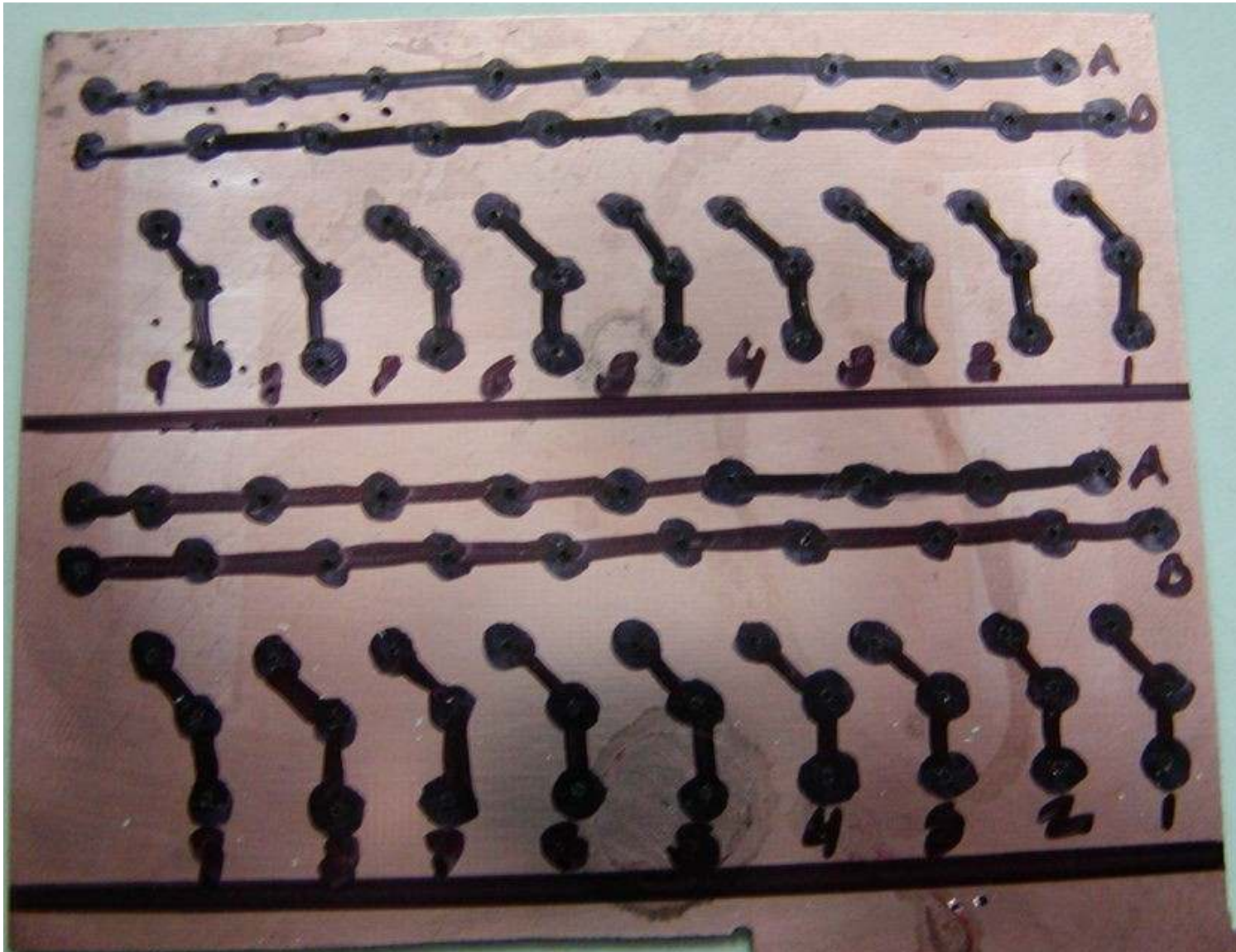
Consumibles



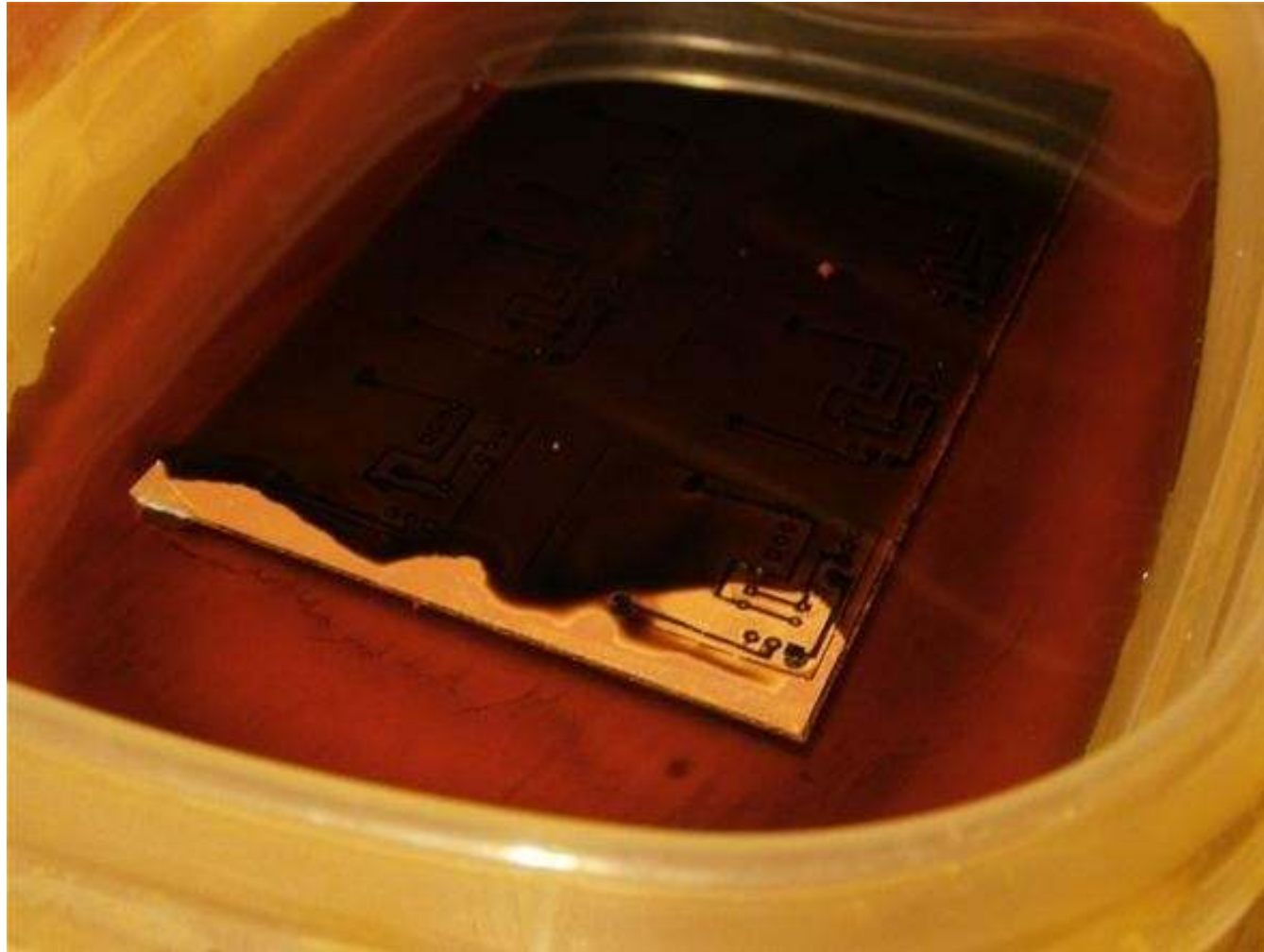
Pistas estañadas



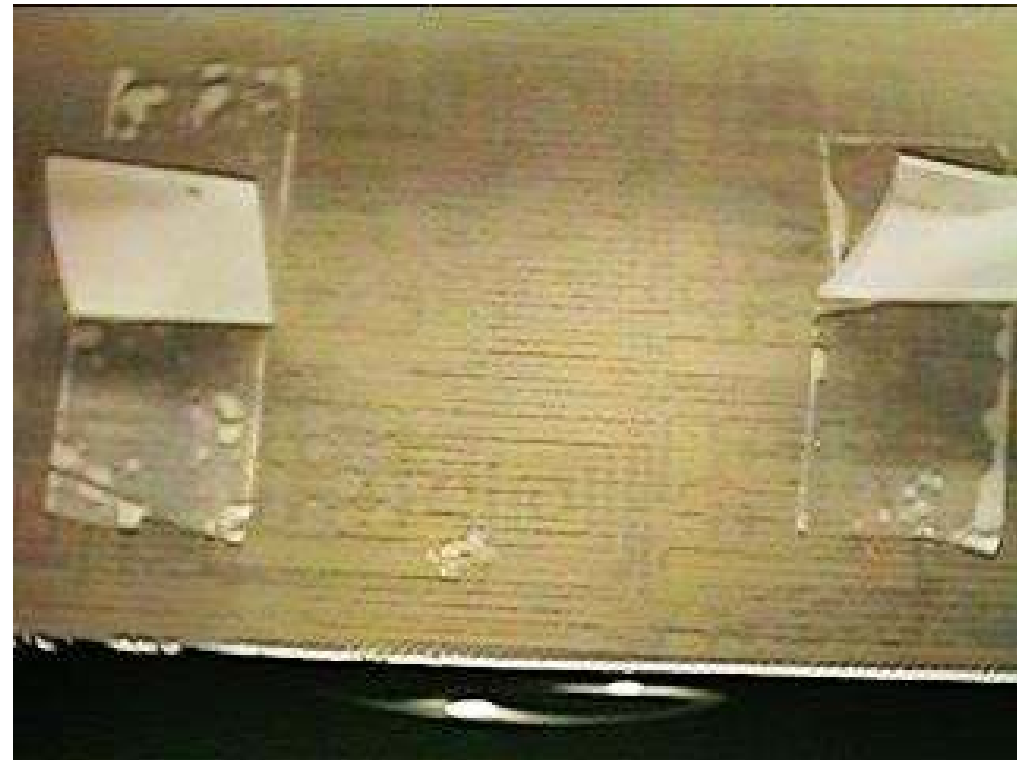
Crear máscara



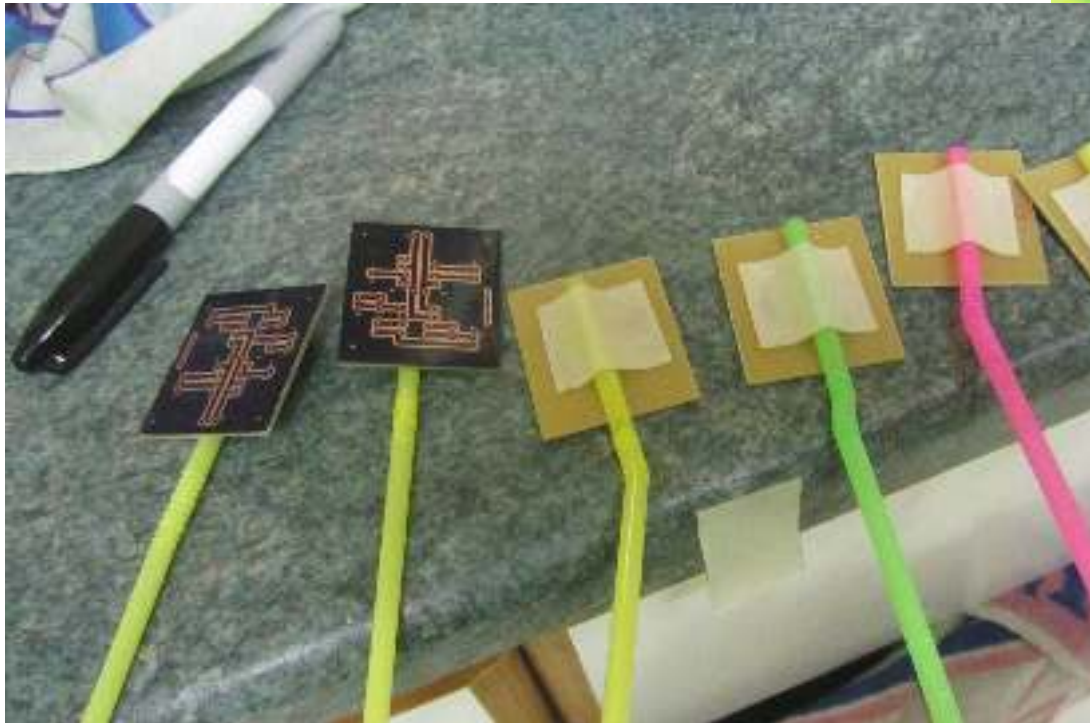
Atacado



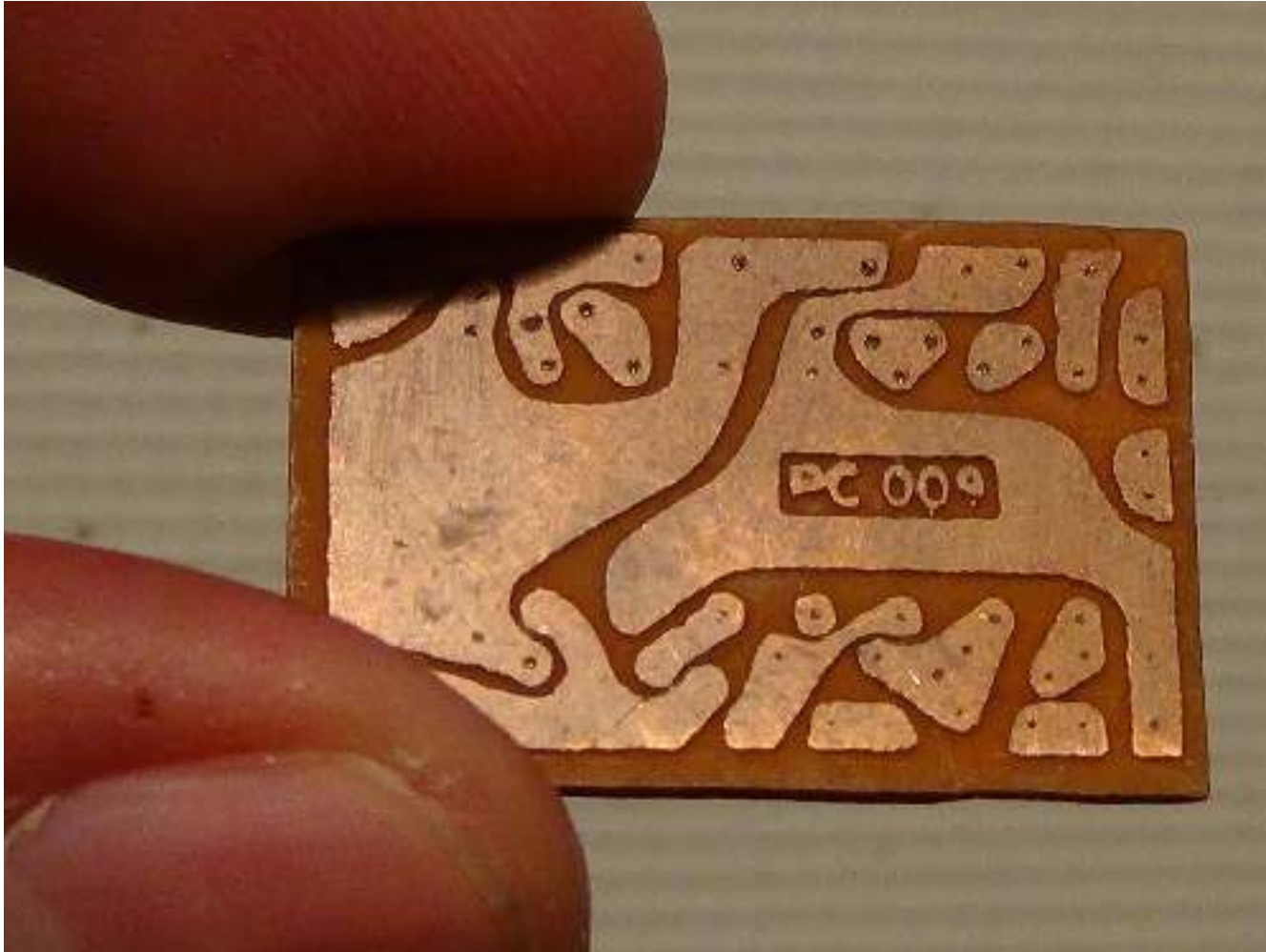
Atacado



Atacado



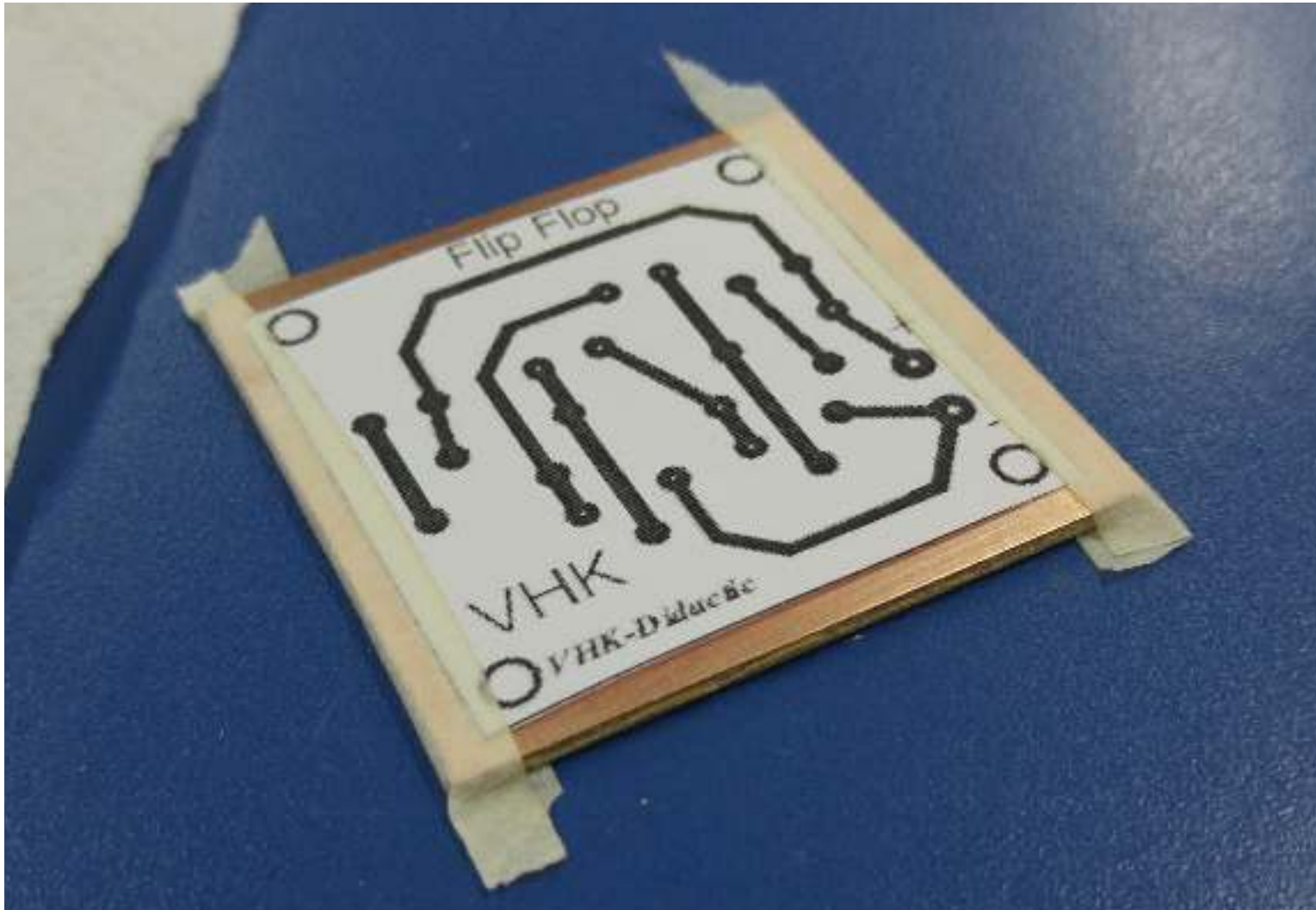
Listo para perforar



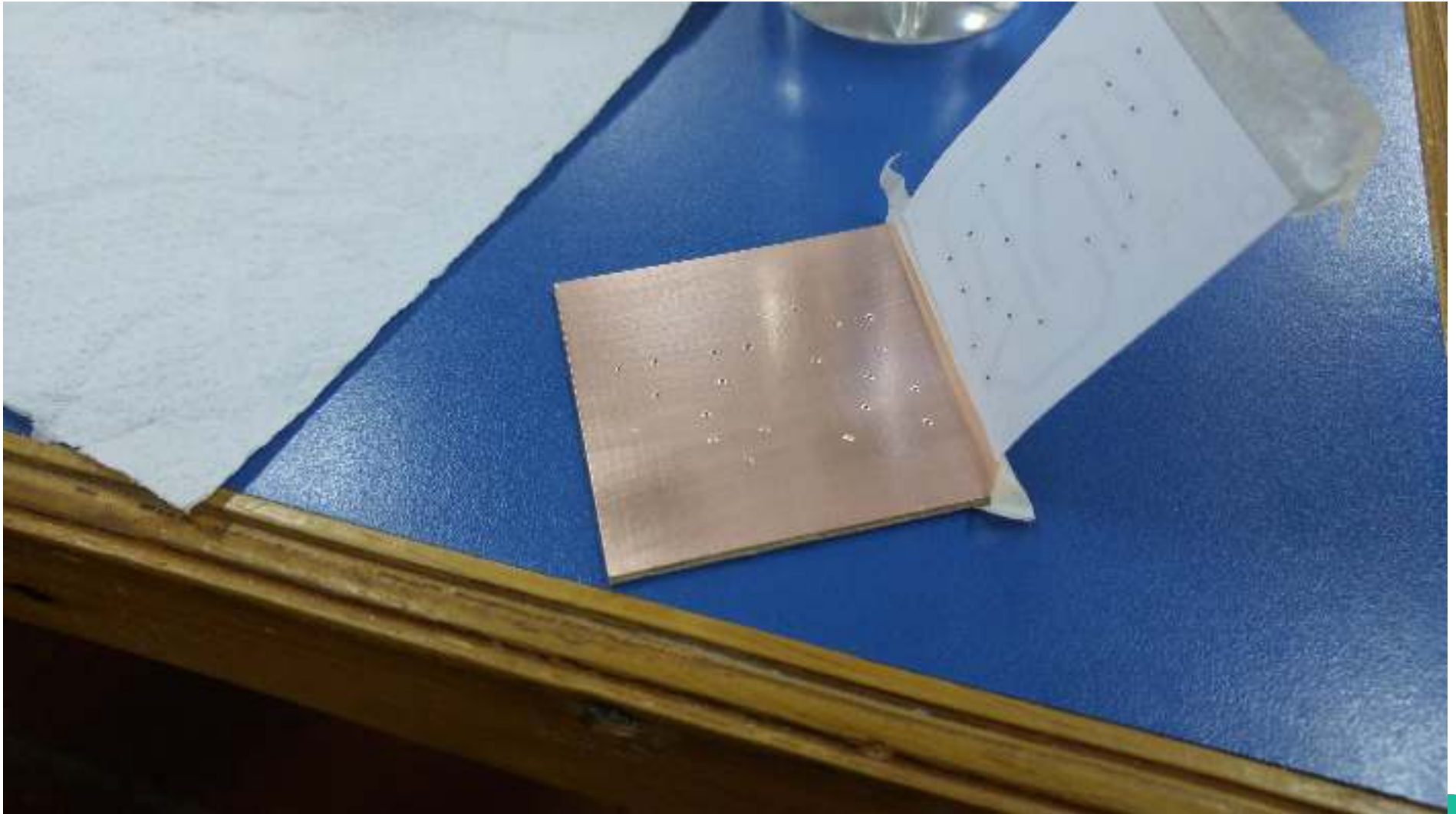
Perforado



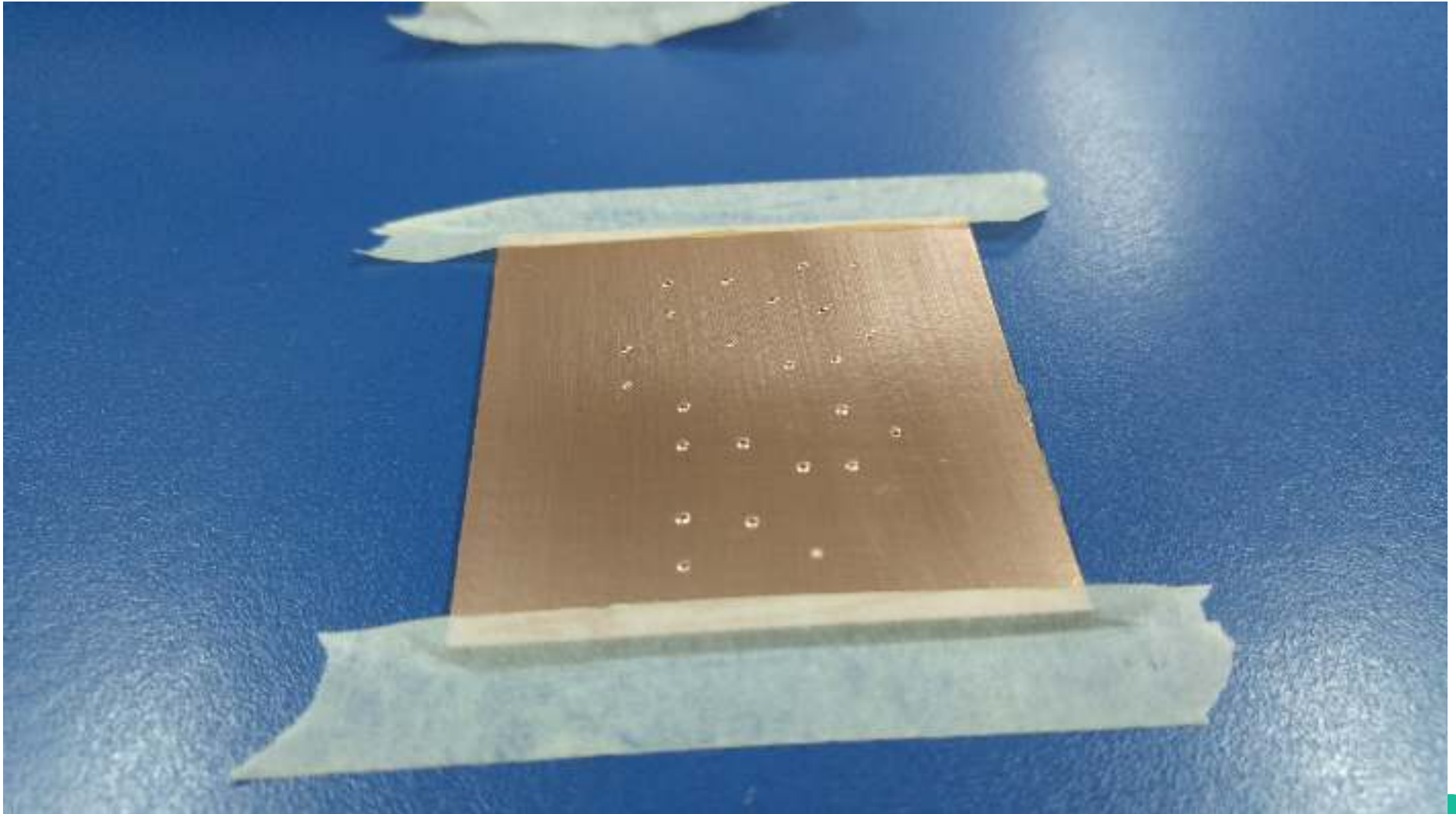
Flip-Flop



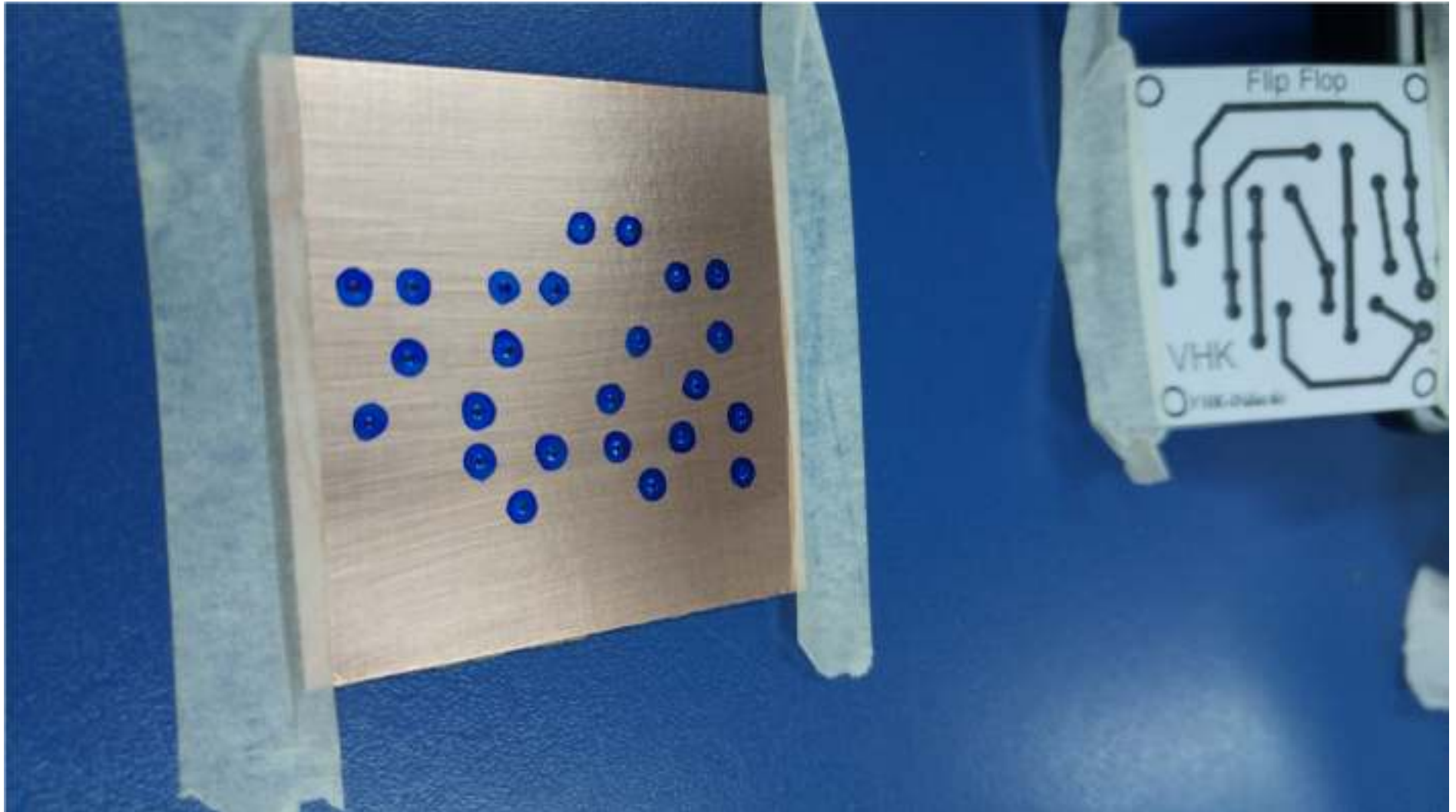
Flip-Flop



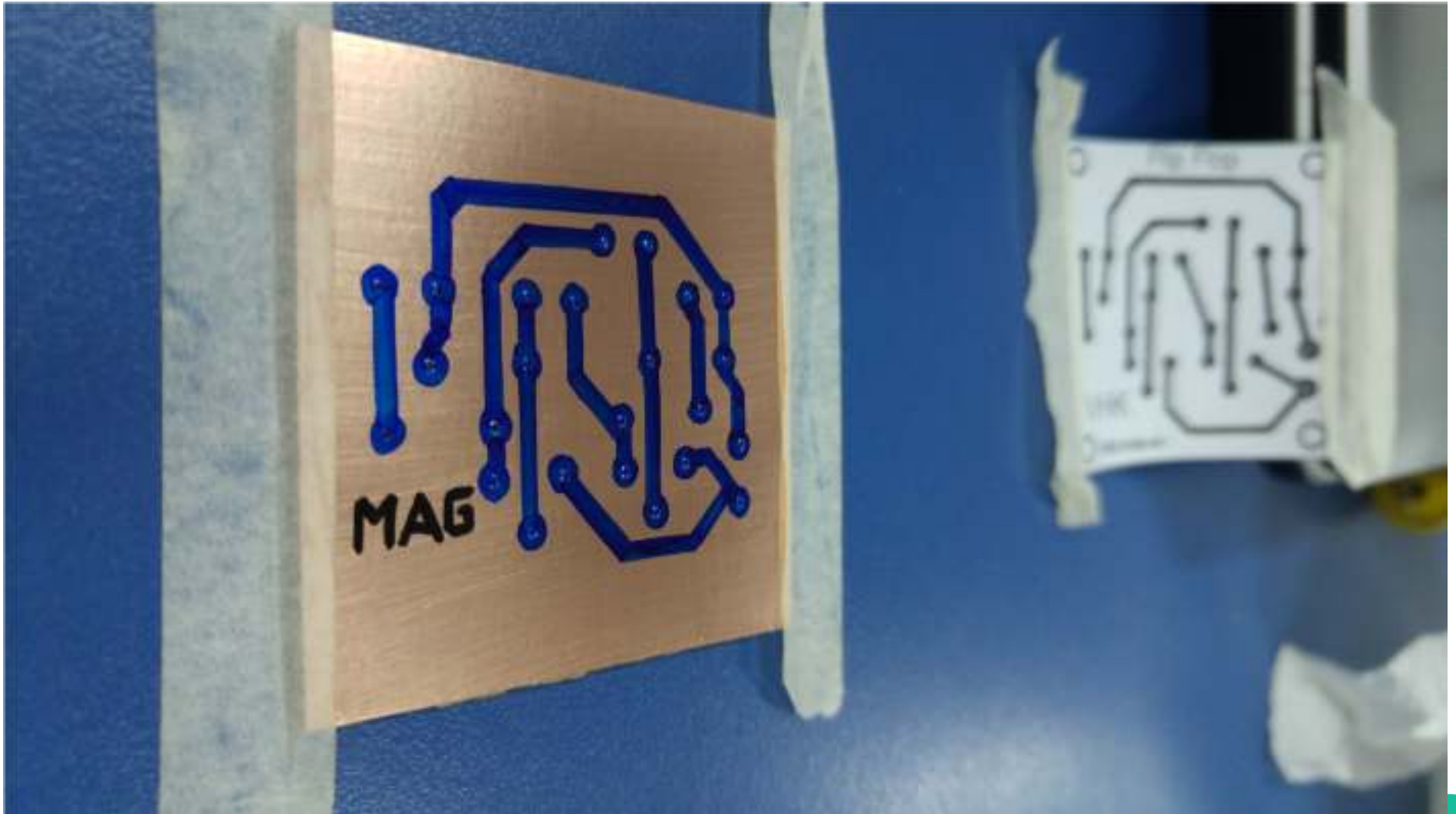
Flip-Flop



Flip-Flop



Flip-Flop



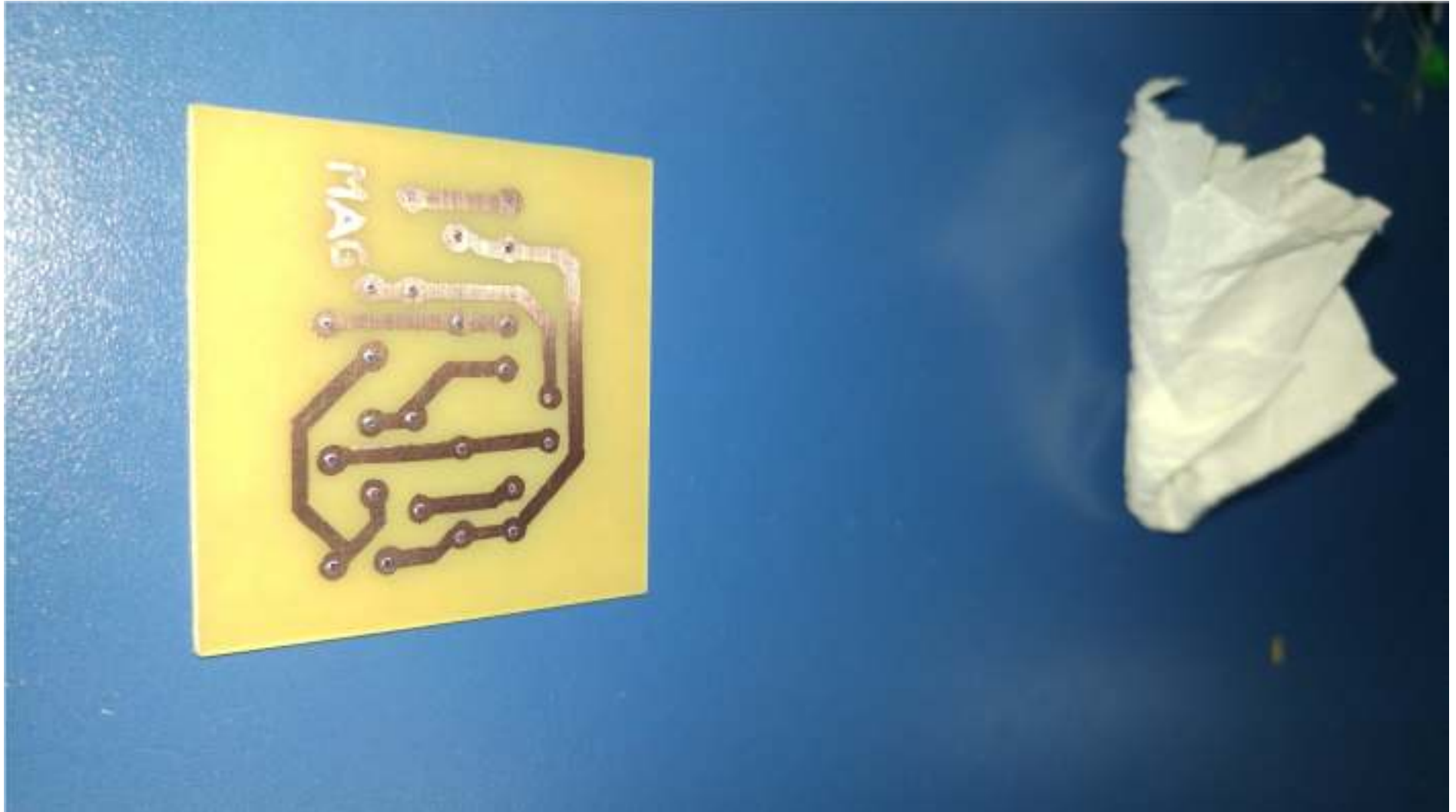
Flip-Flop



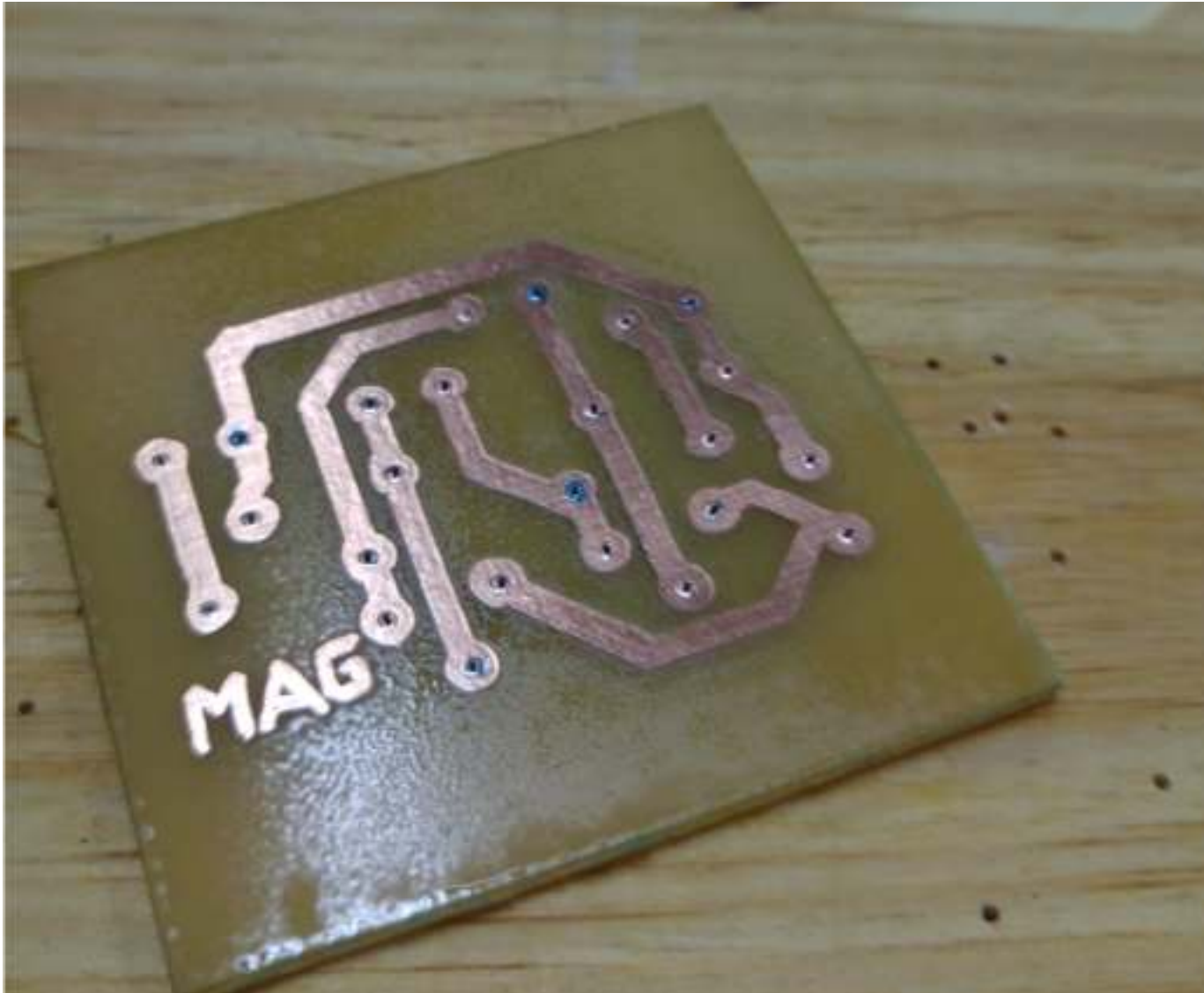
Flip-Flop



Flip-Flop



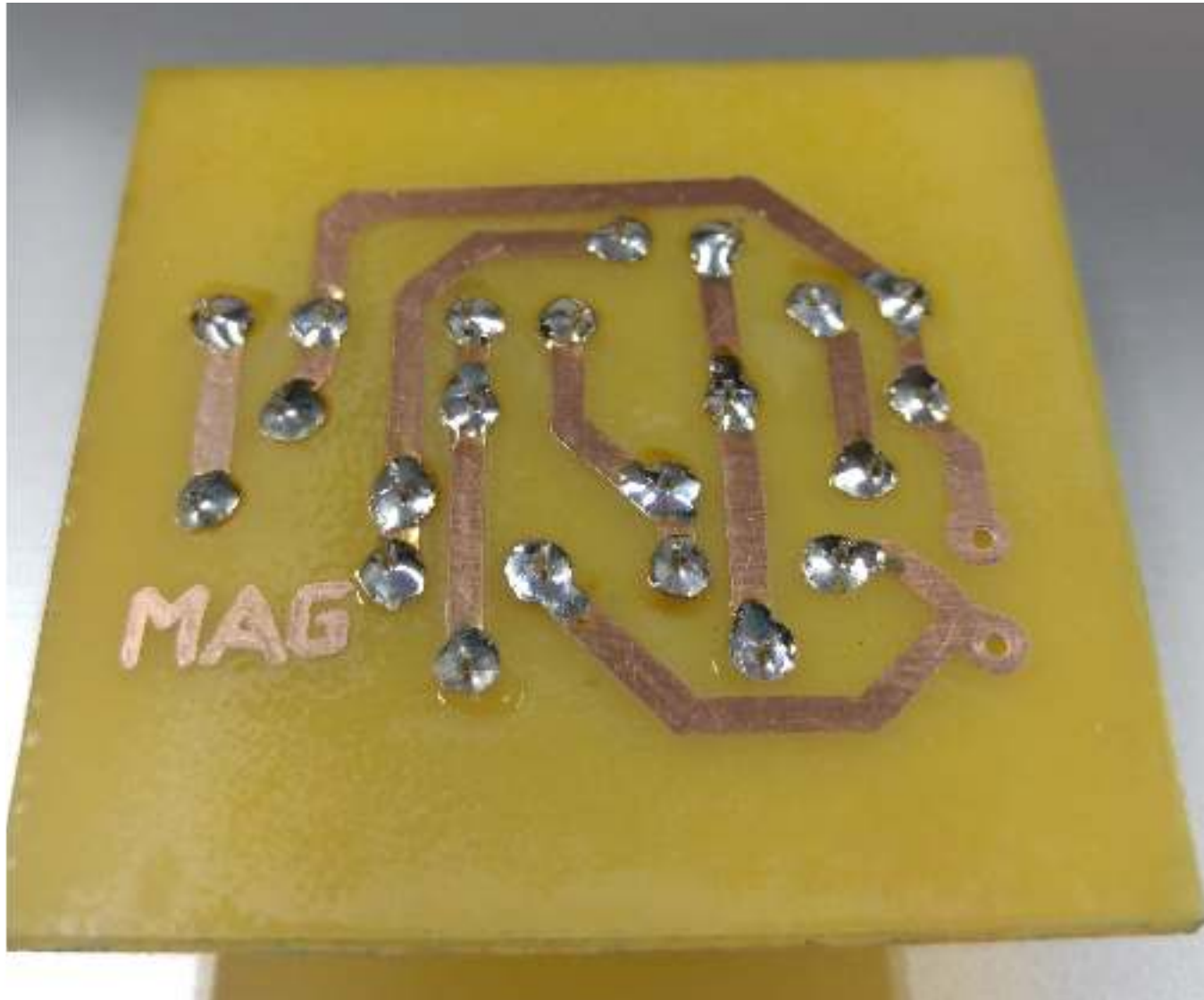
Flip-Flop



Flip-Flop



Flip-Flop



Flip-Flop

