

2 Assembling

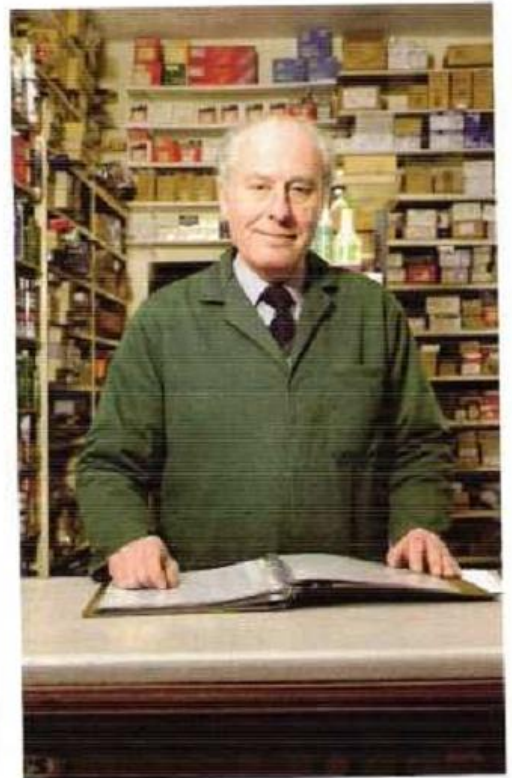
- Start here** 1 Work in pairs. You want to assemble a skateboard. What do you need? Choose items from page 11, exercise 7.

assemble (a skateboard) = fit the parts (of a skateboard) together

- Listening** 2  16 Listen and complete the checklist.

write: 1 mm; say *one millimetre* or *one mil*
write: 5 mm; say *five millimetres* or *five mil*
(Stress the underlined syllable)
size M5 = 5 mm

	Size	Quantity
spanner	_____ mm	1
nuts	_____ mm	_____
bolts	M_____	_____



- Speaking** 3 Work in pairs. Make dialogues with your partner.

- 1 bolts / 10 mm / 50
- 2 washers / M6 / 60
- 3 screws / 24 mm / 100
- 4 nuts / 36 mm / 75
- 5 bolts / M16 / 60
- 6 nails / 30 mil / 80

Example:

Customer: I need some bolts, please.

Shopkeeper: What size?

Customer: 10 mm.

Shopkeeper: How many?

Customer: Fifty, please.

- Task** 4 How do you assemble a skateboard? Put these diagrams in order.

